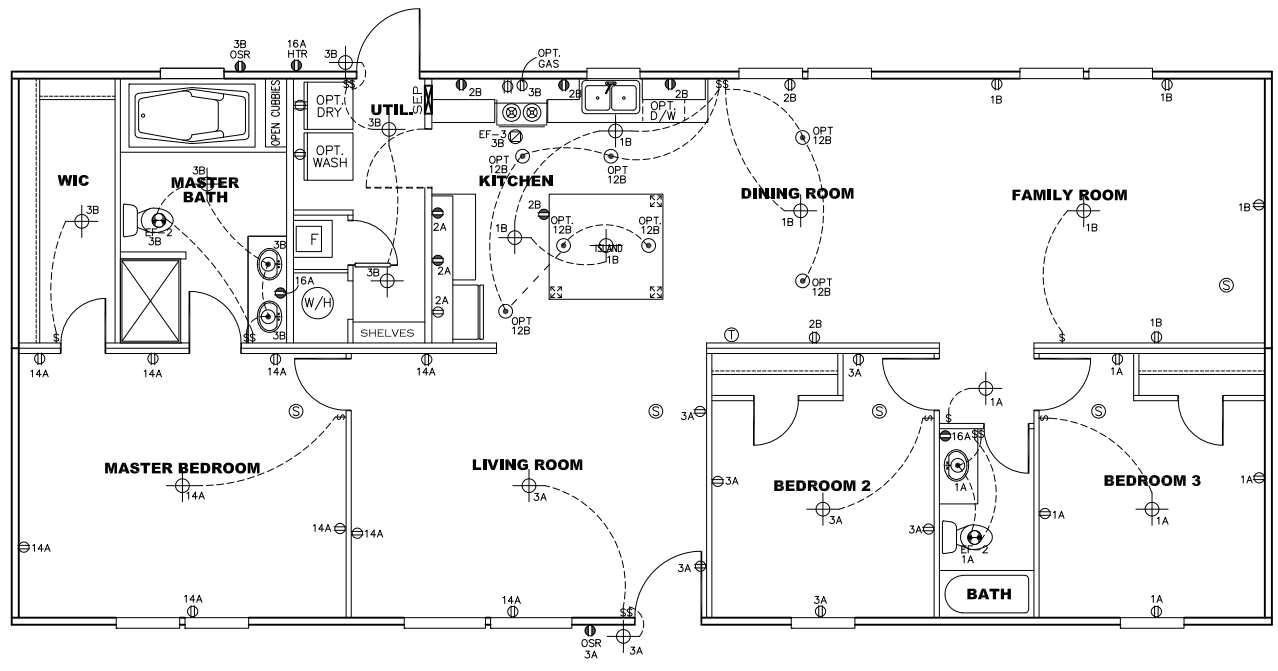
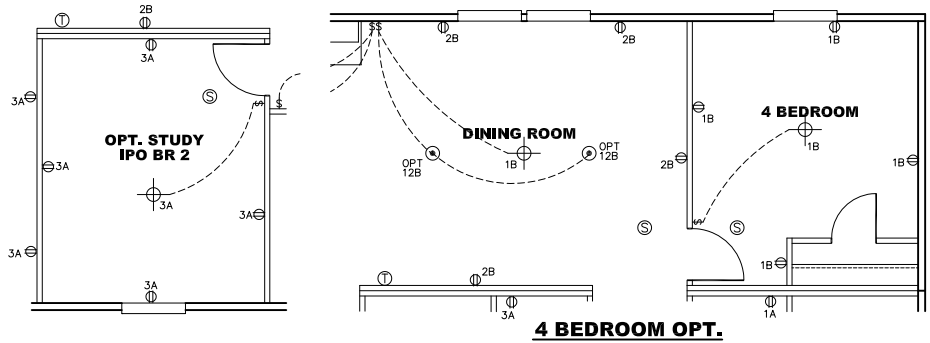


NOTES:

1. ALL CIRCUITS SHOWN ARE FOR REFERENCE AND MAY BE CHANGED BASED ON OPTIONAL COMPONENTS INSTALLED IN THE HOME.
2. REFER TO EL SECTION OF THE DAPIA FOR SYMBOL CHART.
3. EITHER LIGHT OR RECEPTACLE MUST CONNECT TO SWITCH.
4. EF-1= 50 CFM EXHAUST FAN REQUIRED FOR THERMAL ZONE III THERMAL ZONES I & II MAY USE FAN OR WINDOW W/1.5 SQ. FT. OPENABLE GLASS.
5. EF-2= 50 CFM EXHAUST FAN REQUIRED THERMAL ZONE I, II, AND III.
6. EF-3= 100 CFM RANGE EXHAUST FAN, SWITCH AT HOOD.
7. EF-4= WHOLE HOUSE VENTILATION PER REQUIREMENTS IN S-HV-10 & 10A OR M-HV-11 & 11A OF DAPIA.
8. REFER TO EL SECTION OF THE DAPIA OR THE MFG. INSTALLATION INSTRUCTIONS FOR PROPER WIRE SIZE AND BREAKER SIZE FOR SPECIFIC APPLIANCE AND MODEL BEING INSTALLED.
9. ALL SMOKE ALARMS TO BE LOCATED ON THE CEILING.
10. DIMENSIONS SHOWN ON PRINT ARE APPROXIMATE AND TO BE USED ONLY AS A GUIDELINE.

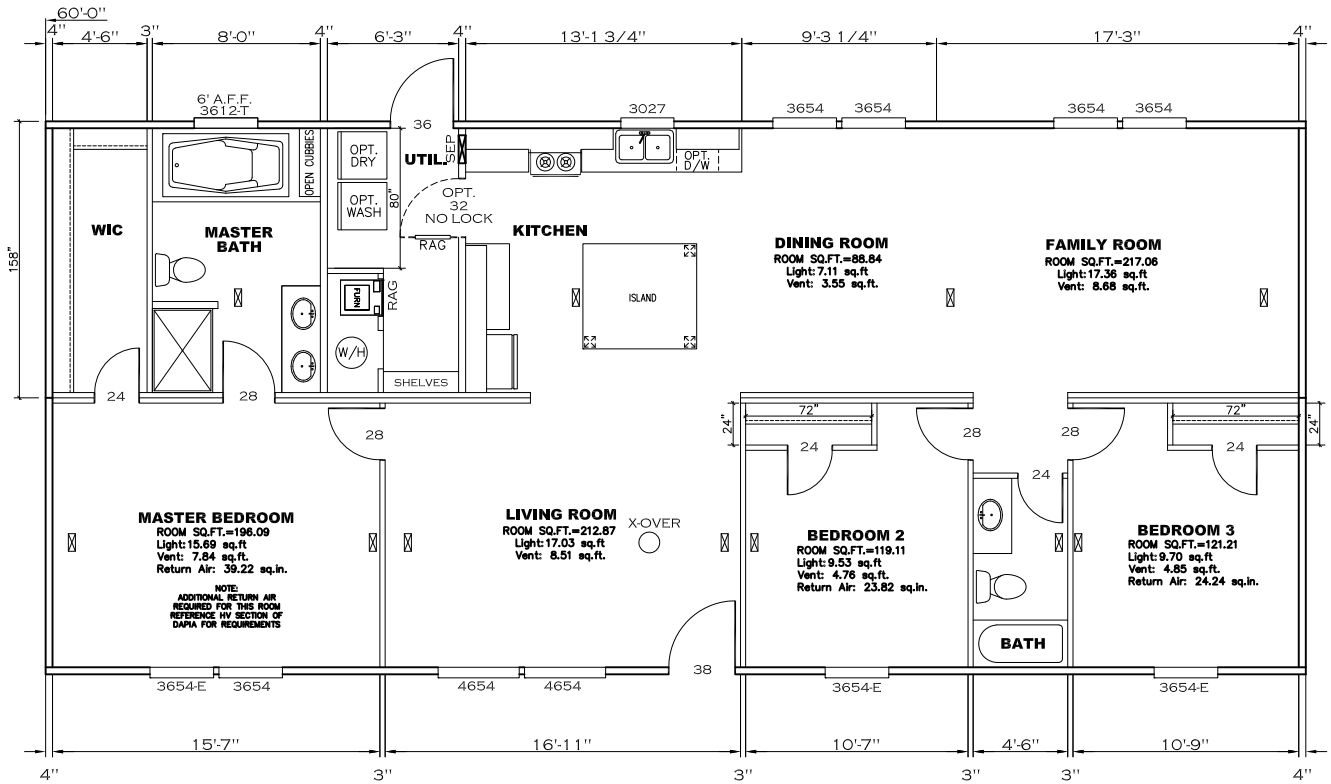
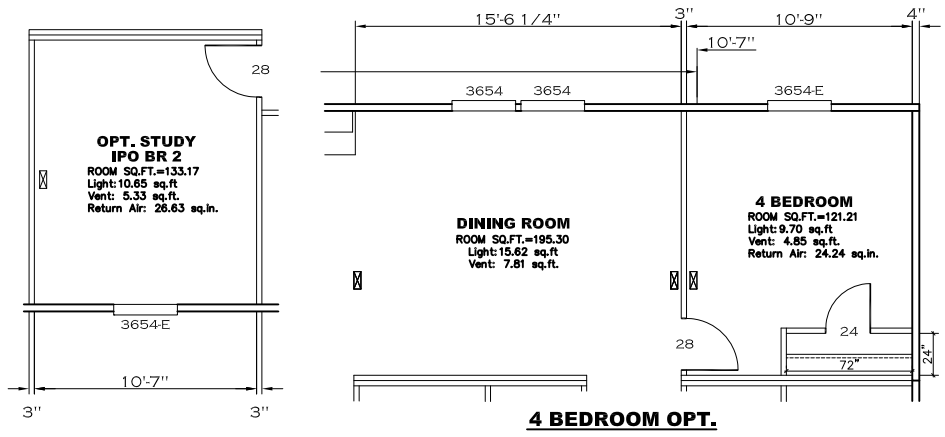


APPROVED **HWC** **APPROVED**
REVISED
 MAR 10 2020
 FP-28-5150
 Federal Manufactured
 Home Construction
 And Safety Standards

CIRCUIT	CIRCUIT #	WIRE	BREAKER	CIRCUIT	CIRCUIT #	WIRE	BREAKER	CIRCUIT	CIRCUIT #	WIRE	BREAKER
LIGHT/RECEP	1A,B,3A,B,14A,12B	14-2	15-SP	WATER HEATER	4A,6B	SEE NOTE #8		BATHROOM	16A	12-2	20-SP
KITCHEN	2A,2B	12-2	20-SP	RANGE	5B,7A	SEE NOTE #8		OPT G/DISP	9B	SEE NOTE #8	
WASHER	12A	12-2	20-SP	FURNACE	6A,8A,B,10A,B	SEE NOTE #8		OPT SPA/WP/JAC	11A,B	SEE NOTE #8	
DRYER	5A,7B	SEE NOTE #8		OPT D/WASH	9A	SEE NOTE #8		FREEZER	N/A	SEE NOTE #8	
				SMOKE DECT.	4B	SEE NOTE #8					

1580 SQ.FT. (STD PLAN "CONDITIONED")
 N/A SQ.FT. (W/OPT. PORCH/RECESS "CONDITIONED")

CMH MANUFACTURING	Model #: ULT28G03A	Drawing #:
	Date: 10/18/18	Scale: N/A
Product Designer: E HARDWICK	28 X 60 Ultra Pro	
ELECTRICAL PLAN-06		



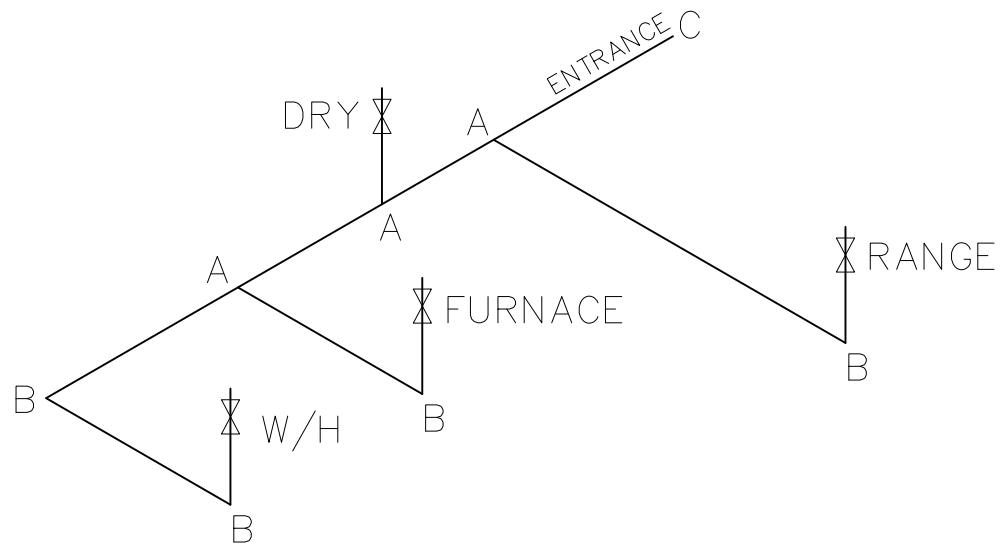
NOTE: ALL BEDROOMS ARE WITHIN 35' OF NEAREST EXIT DOOR

APPROVED **HWC** **APPROVED**
REVISED
 30 APR 2019
 FP-28-5150
 Federal Manufactured
 Home Construction
 And Safety Standards

1580 SQ.FT. (STD PLAN "CONDITIONED")	
N/A SQ.FT. (W/OPT. PORCH/RECESS "CONDITIONED")	
CMH MANUFACTURING	Model #: ULT28G03A Date: 10/18/18 Scale: N/A
Product Designer: E HARDWICK	28 X 60 Ultra Pro
FLOOR PLAN	

LEGEND		APPLIANCE BTU'S RATINGS MAX. INPUT	
SYM	FITTINGS		
A	TEE	FURNACE	65,000 BTU'S
B	90 ELL	W/H	37,000 BTU'S
X	VALVE	RANGE	52,000 BTU'S
C	CAP	DRYER	22,000 BTU'S

MDL=16'



NOTES:

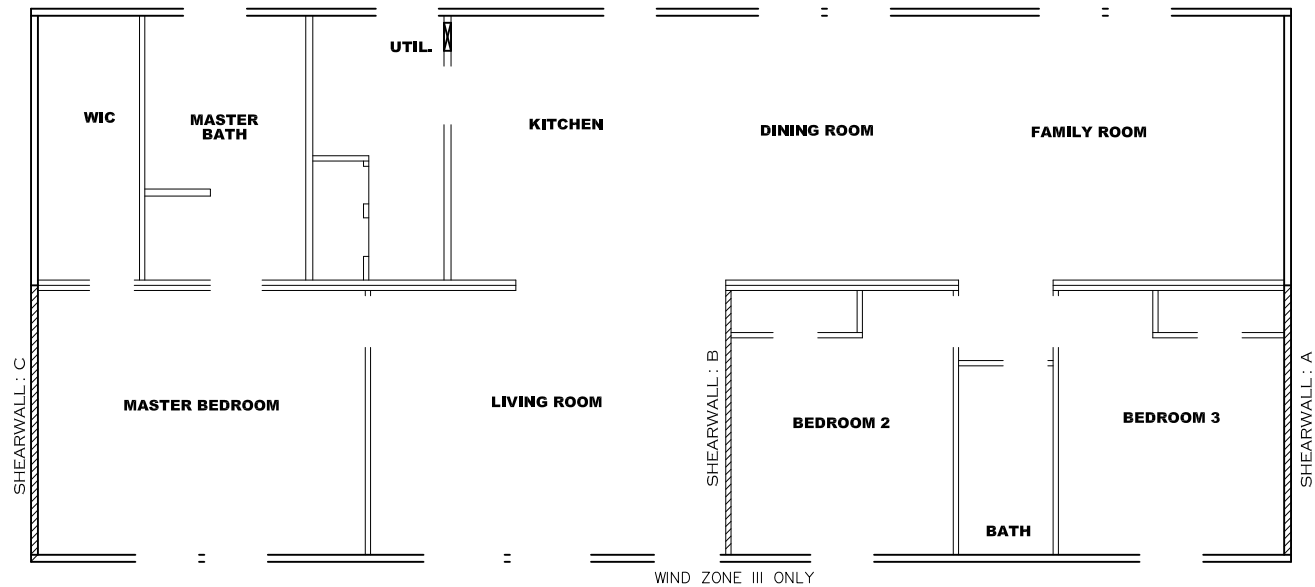
- 1) ALL PIPE IS 3/4" I.D.CAST (EXCEPT WHERE NOTED OTHERWISE)
- 2) MDL=MAX. DETERMINED LENGTH OF PIPE
- 3) FITTING MAY BE ADDED OR SUBTRACTED TO TRAVERSE VARIATIONS IN AXLE QUANTITY, PLACEMENT, AND FRAME TYPE.
- 4) INLET LOCATION MAY VARY TO STAY WITHIN MAX. DETERMINED LENGTH

APPROVED
HWG
 OCT 26 2018
 Federal Manufactured
 Home Construction
 And Safety Standards
APPROVED

GAS LINE SIZE CHART	
	= 1"
	= 3/4"

FP-28-5150

1580 SQ.FT. (STD PLAN "CONDITIONED")	
N/A SQ.FT. (W/OPT. PORCH/RECESS "CONDITIONED")	
CMH MANUFACTURING	Model #: ULT28G03A Date: 10/18/18 Scale: N/A
Product Designer: E HARDWICK	29M154
GAS LINE DETAIL	



Model # 29M154-8FT

Minimum Joist Spacing 16 "

- Box Width = 158 " Double wide No Offset Box
- Box Length = 60 ft. 95.5" 12" MIN. IBEAM No Clerestory
- No Skylights No Origami Dormer
- No Porches No Sunken Floor
- Joist Size = #2 sp 2x6 Lags 9Mx3" No Parapet Roof

Version R13.6a

Wind Zone 1 Standard Roof		(3/8" sheathing only with 15 gax 1.5" at 5"/10" oc. (197 plf) Chords: #3 2x4 plate w/ 2x4 rail spliced w/ 12" glue block.		96 inch sidewall		
Diaphragm Construction:						
Shearwall	Dist./ Hitch	Length	PLF	# of Joists	Lags	Notes
A	0'	136"	162	2	2/1	
C	60'	136"	162	2	2/1	
Wind Zone 2 Standard Roof		(3/8" sheathing only with 15 gax 1.5" at 5"/10" oc. (197 plf) Chords: #3 2x4 plate w/ 2x4 rail spliced w/ 12" glue block.		96 inch sidewall		
Diaphragm Construction:						
Shearwall	Dist./ Hitch	Length	PLF	# of Joists	Lags	Notes
A	0'	Full	425	2	5/5	
C	60'	Full	425	2	5/5	
Wind Zone 3 Standard Roof		(3/8" sheathing only with 15 gax 1.5" at 5"/10" oc. (197 plf) Chords: #3 2x4 plate w/ 2x4 rail spliced w/ 12" glue block.		96 inch sidewall		
Diaphragm Construction:						
Shearwall	Dist./ Hitch	Length	PLF	# of Joists	Lags	Notes
A	0'	Full	425	2	5/5	
B	26.79'	Full	515	2	4/4	
C	60'	Full	425	2	5/5	

HWG

APPROVED **APPROVED**

OCT 26 2018

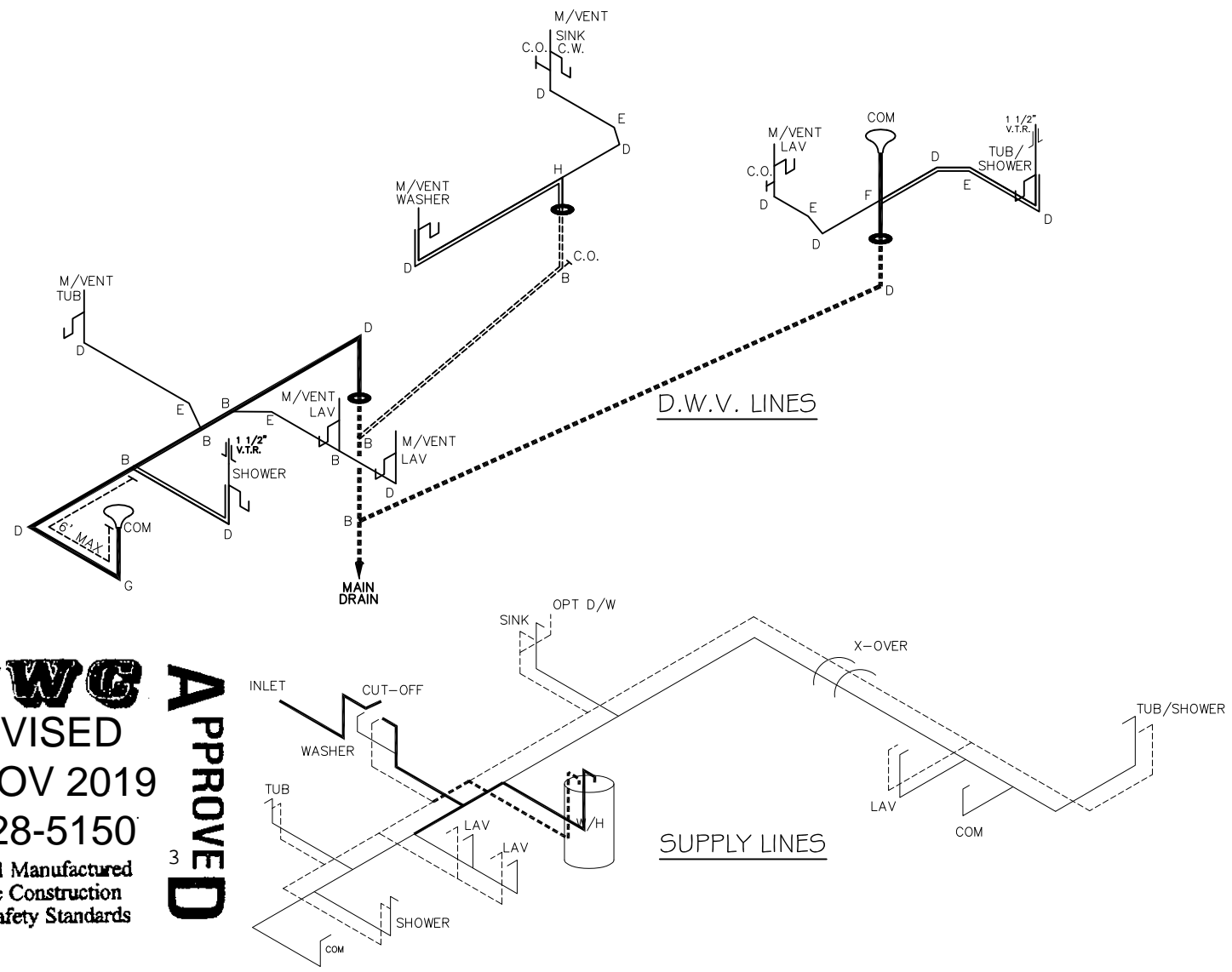
Federal Manufactured
Home Construction
And Safety Standards

FP-28-5150

1580 SQ.FT. (STD PLAN "CONDITIONED")	
N/A SQ.FT. (W/OPT. PORCH/RECESS "CONDITIONED")	
CMH MANUFACTURING	Model #: ULT28G03A Date: 10/18/18 Scale: N/A
Product Designer: E HARDWICK	
28 X 60 Ultra Pro	
8' SHEARWALL	

NOTE: DASHED LINES INDICATE HOT WATER
SOLID LINES INDICATE COLD WATER

— = 3/4"
— = 1/2"



APPROVED **HWG** **APPROVED**
 REVISED
 21 NOV 2019
 FP-28-5150
 Federal Manufactured
 Home Construction
 And Safety Standards

LEGEND	
A	SHORT TURN T-Y
B	LONG TURN T-Y
C	1/4 BEND
D	LONG SWEEP 1/4 BEND
E	45 ELL
F	DBL. SANITARY TEE
G	4x3 CLOSET ELL
H	DOUBLE ELL
I	22 1/2" ELL
J	45° Y
K	LONG TURN STREET ELBOW
L	45 FTC ELL

DWV LINE SIZE CHART	
—	= 3"
—	= 2"
—	= 1 1/2"

1580 SQ.FT. (STD PLAN "CONDITIONED")	
N/A SQ.FT. (W/OPT. PORCH/RECESS "CONDITIONED")	
CMH MANUFACTURING	Model #: ULT28603A Date: 10/18/18 Scale: N/A
Product Designer: E HARDWICK	29M154
D.W.V. and Supply Lines	