

72" WALK-IN SHOWER OPT

NOTE: ALL BEDROOMS ARE WITHIN 35' OF NEAREST EXIT DOOR

OPT 16" DORMER - 21'-1"
 **DIMENSION IS FROM HITCH
 END TO RIGHT SIDE OF DORMER

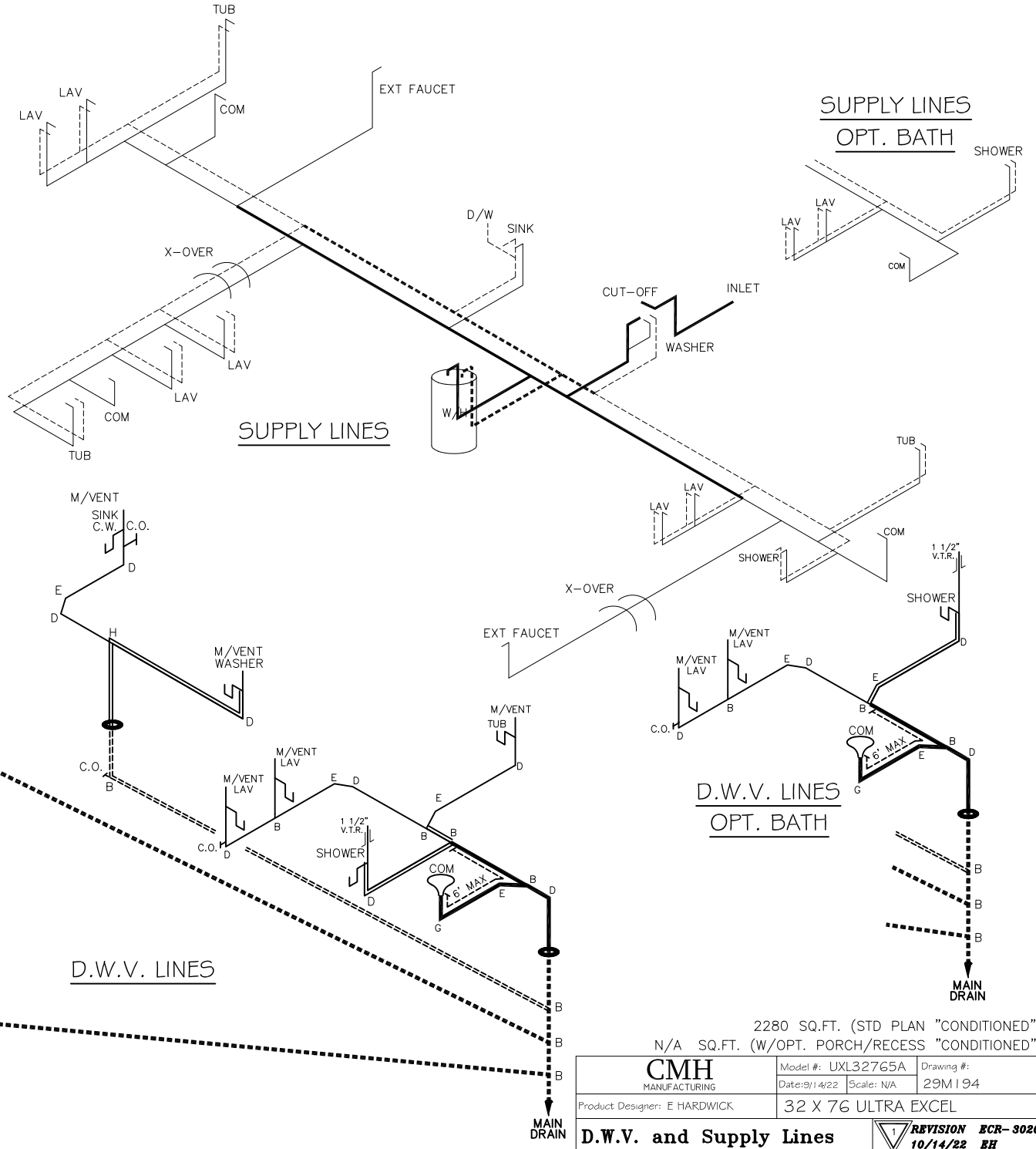
2280 SQ.FT. (STD PLAN "CONDITIONED")
 N/A SQ.FT. (W/OPT. PORCH/RECESS "CONDITIONED")

CMH MANUFACTURING Product Designer: E HARDWICK	Model #: UXL32765A Date: 9/14/22 Scale: N/A	Drawing #: 29M194
	32 X 76 ULTRA EXCEL	
FLOOR PLAN		
REVISION ECR-3020 10/14/22 EH		

NOTE:
DASHED LINES INDICATE HOT WATER
SOLID LINES INDICATE COLD WATER

— = 3/4"
— = 1/2"

SHIP LOOSE CHART	
PARTS SHIPPED LOOSE W/HOME (TO BE INSTALLED IN FIELD)	
QUANTITY	DESCRIPTION
2	ⓐ 3" LONG TURN T-Y
2	ⓑ 3" LONG SWEEP 1/4 BEND
1	ⓒ 3x2x3 LONG TURN T-Y
1	ⓓ 2" LONG TURN T-Y
1	2" CLEAN OUT
1	3" COUPLING
1	APPROVED CEMENT
2	1 1/2" ABS PIPE 20'
2	3" ABS PIPE 20'
varies	SUPPORT STRAPS



LEGEND	
A	SHORT TURN T-Y
B	LONG TURN T-Y
C	1/4 BEND
D	LONG SWEEP 1/4 BEND
E	45° ELL
F	DBL. SANITARY TEE
G	4x3 CLOSET ELL
H	DOUBLE ELL
I	22 1/2° ELL
J	45° Y
K	LONG TURN STREET ELBOW
L	45° FTC ELL

D.W.V. LINE SIZE CHART	
—	= 3"
—	= 2"
—	= 1 1/2"

2280 SQ.FT. (STD PLAN "CONDITIONED")
N/A SQ.FT. (W/OPT. PORCH/RECESS "CONDITIONED")

CMH MANUFACTURING Product Designer: E HARDWICK	Model #: UXL32765A	Drawing #:
	Date: 9/14/22	Scale: N/A
32 X 76 ULTRA EXCEL		

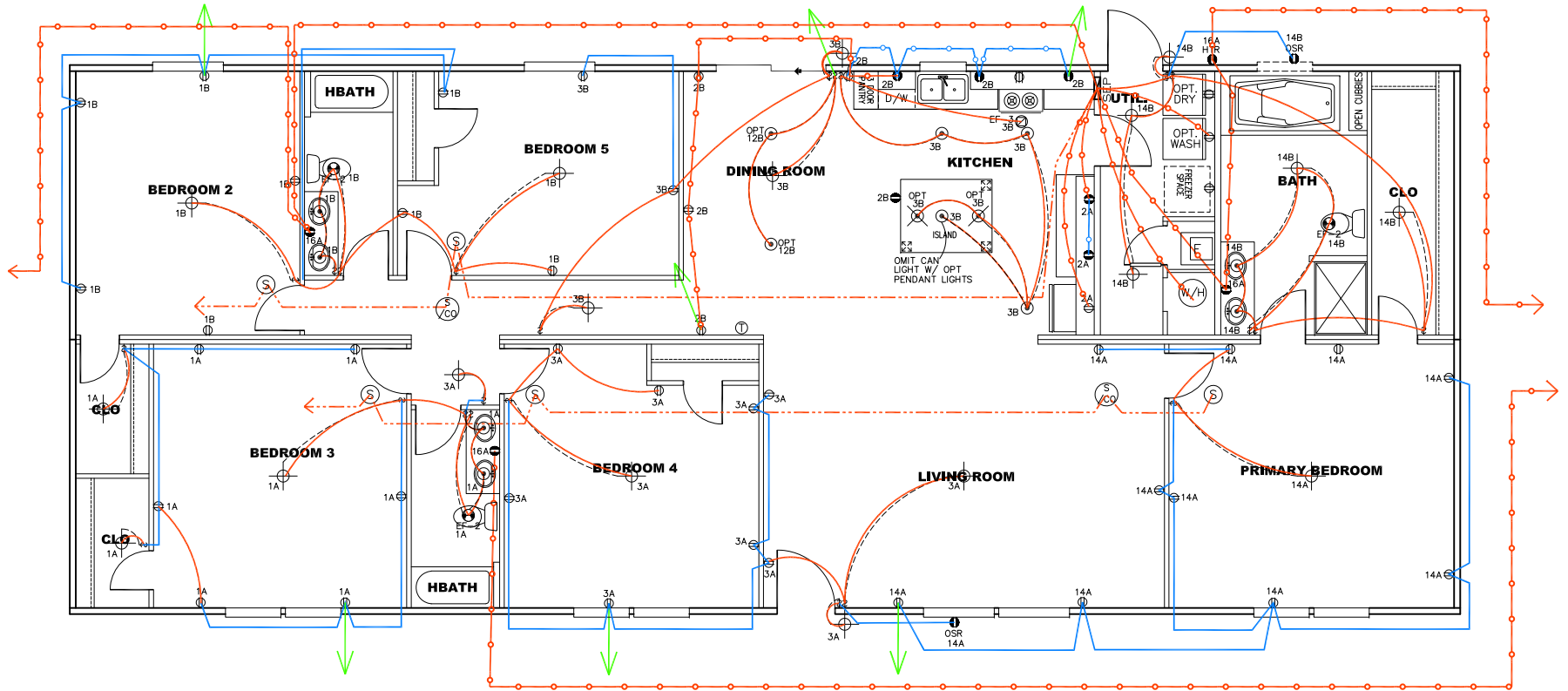
D.W.V. and Supply Lines

REVISION	ECR-3020
10/14/22	BH

NOTES:

1. ALL CIRCUITS SHOWN ARE FOR REFERENCE AND MAY BE CHANGED BASED ON OPTIONAL COMPONENTS INSTALLED IN THE HOME.
2. REFER TO DAPIA MANUAL FOR SYMBOL CHART.
3. EITHER LIGHT OR RECEPTACLE MUST CONNECT TO SWITCH.
4. EF-1= 50 CFM EXHAUST FAN REQUIRED FOR THERMAL ZONE III THERMAL ZONES I & II MAY USE FAN OR WINDOW W/1.5 SQ. FT. OPENABLE GLASS.
5. EF-2= 50 CFM EXHAUST FAN REQUIRED THERMAL ZONE I, II, AND III.
6. EF-3= 100 CFM RANGE EXHAUST FAN, SWITCH AT HOOD.
7. EF-4= WHOLE HOUSE VENTILATION REQUIREMENTS PER DAPIA MANUAL.
8. REFER TO DAPIA MANUAL OR THE MFG. INSTALLATION INSTRUCTIONS FOR PROPER WIRE SIZE AND BREAKER SIZE FOR SPECIFIC APPLIANCE AND MODEL BEING INSTALLED.
9. ALL SMOKE ALARMS TO BE LOCATED ON THE CEILING.
10. CARBON MONOXIDE ALARMS ARE ONLY REQUIRED WHEN HOME HAS EITHER FUEL BURNING APPLIANCES, IS GARAGE READY OR IS BASEMENT READY. REFERENCE DAPIA MANUAL FOR ADDITIONAL INFORMATION.
11. DIMENSIONS SHOWN ON PRINT ARE APPROXIMATE AND TO BE USED ONLY AS A GUIDELINE.

CIRCUIT	CIRCUIT #	WIRE	BREAKER	CIRCUIT	CIRCUIT #	WIRE	BREAKER	CIRCUIT	CIRCUIT #	WIRE	BREAKER
LIGHT/RECEP	1A,B,3A,B,14A,B,12B	14-2	15-SP	WATER HEATER	4A,6B	SEE NOTE #8		BATHROOM	16 A	12-2	20-SP
KITCHEN	2A,2B	12-2	20-SP	RANGE	5B,7A	SEE NOTE #8		OPT G/DISP	9B	SEE NOTE #8	
WASHER	12A	12-2	20-SP	FURNACE	6A,8A,B,10A,B	SEE NOTE #8		OPT SPLY W/ JAC	11A,B	SEE NOTE #8	
DRYER	5A,7B	SEE NOTE #8		OPT D/WASH	9A	SEE NOTE #8		FREEZER	13A	SEE NOTE #8	
				SMOKE DECT.	4B	SEE NOTE #8					



- = 12-2 WIRE (WALL)
- = 14-2 WIRE (WALL)
- = 12-2 WIRE (CEILING)
- = 14-2 WIRE (CEILING)
- - - = 14-3 WIRE (CEILING)
- = FURNACE/RANGE/DRYER (FLOOR)
- = CROSSOVER

2280 SQ.FT. (STD PLAN "CONDITIONED")
N/A SQ.FT. (W/OPT. PORCH/RECESS "CONDITIONED")

CMH MANUFACTURING	Model #: UXL32765A Date: 9/14/22 Scale: N/A
Product Designer: E HARDWICK	29M194
ELECTRICAL PLAN-06	
1 REVISION ECR-3020 10/14/22 EH	