

- NOTES:
1. ALL CIRCUITS SHOWN ARE FOR REFERENCE AND MAY BE CHANGED BASED ON OPTIONAL COMPONENTS INSTALLED IN THE HOME.
  2. REFER TO DAPIA MANUAL FOR SYMBOL CHART.
  3. EITHER LIGHT OR RECEPTACLE MUST CONNECT TO SWITCH.
  4. EF-1= 50 CFM EXHAUST FAN REQUIRED FOR THERMAL ZONE III THERMAL ZONES I & II MAY USE FAN OR WINDOW W/1.5 SQ. FT. OPENABLE GLASS.
  5. EF-2= 50 CFM EXHAUST FAN REQUIRED THERMAL ZONE I, II, AND III.
  6. EF-3= 100 CFM RANGE EXHAUST FAN, SWITCH AT HOOD.
  7. EF-4= WHOLE HOUSE VENTILATION REQUIREMENTS PER DAPIA MANUAL.
  8. REFER TO DAPIA MANUAL OR THE MFG. INSTALLATION INSTRUCTIONS FOR PROPER WIRE SIZE AND BREAKER SIZE FOR SPECIFIC APPLIANCE AND MODEL BEING INSTALLED.
  9. ALL SMOKE ALARMS TO BE LOCATED ON THE CEILING.
  10. CARBON MONOXIDE ALARMS ARE ONLY REQUIRED WHEN HOME HAS EITHER FUEL BURNING APPLIANCES, IS GARAGE READY OR IS BASEMENT READY. REFERENCE DAPIA MANUAL FOR ADDITIONAL INFORMATION.
  11. DIMENSIONS SHOWN ON PRINT ARE APPROXIMATE AND TO BE USED ONLY AS A GUIDELINE.

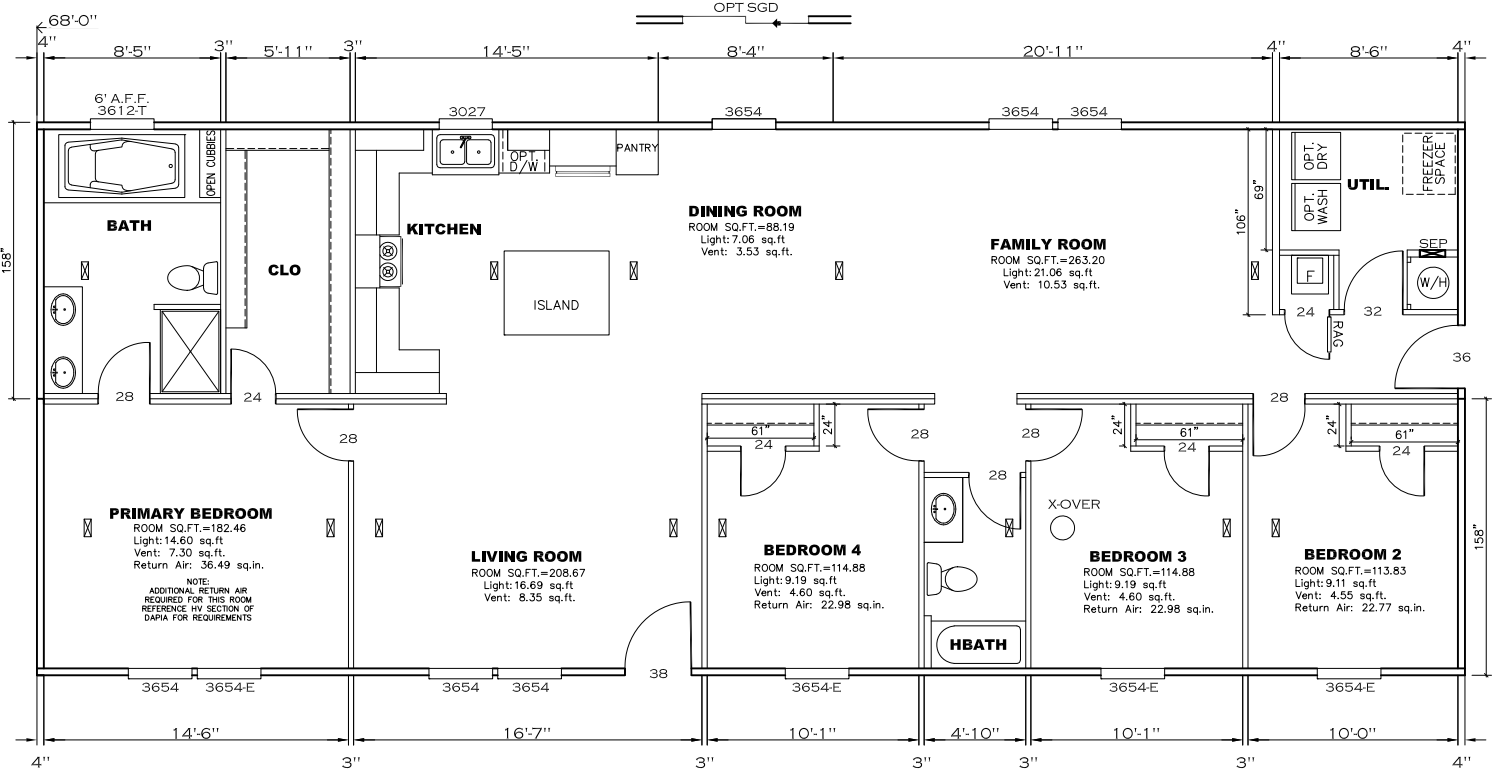
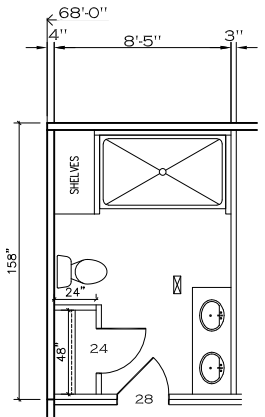
**APPROVED** **HWG** **APPROVED**  
 17 JAN 2022  
 FP-28-5507  
 Federal Manufactured  
 Home Construction  
 And Safety Standards

CIRCUIT	CIRCUIT #	WIRE	BREAKER	CIRCUIT	CIRCUIT #	WIRE	BREAKER	CIRCUIT	CIRCUIT #	WIRE	BREAKER
LIGHT/RECEP	1A,1B,3A,3B,14A,12B	14-2	15-SP	WATER HEATER	4A,6B	SEE NOTE #8		BATHROOM	16A	12-2	20-SP
KITCHEN	2A,2B	12-2	20-SP	RANGE	5B,7A	SEE NOTE #8		OPT G/DISP	9B	SEE NOTE #8	
WASHER	12A	12-2	20-SP	FURNACE	6A,8A,B,10A,B	SEE NOTE #8		OPT SPLY/WP/DIAC	11A,B	SEE NOTE #8	
DRYER	5A,7B	SEE NOTE #8		OPT D/WASH	9A	SEE NOTE #8		FREEZER	13A	SEE NOTE #8	
				SMOKE DECT.	4B	SEE NOTE #8					

1790 SQ.FT. (STD PLAN "CONDITIONED")  
N/A SQ.FT. (W/OPT. PORCH/RECESS "CONDITIONED")

<b>CMH</b> MANUFACTURING	Model #: UXL28684A Date: 1/2/2021 Scale: N.T.S.	Drawing #: 29M183
Product Designer: E. HARDWICK		28x68 Ultra Excel 684

**ELECTRICAL PLAN-06**



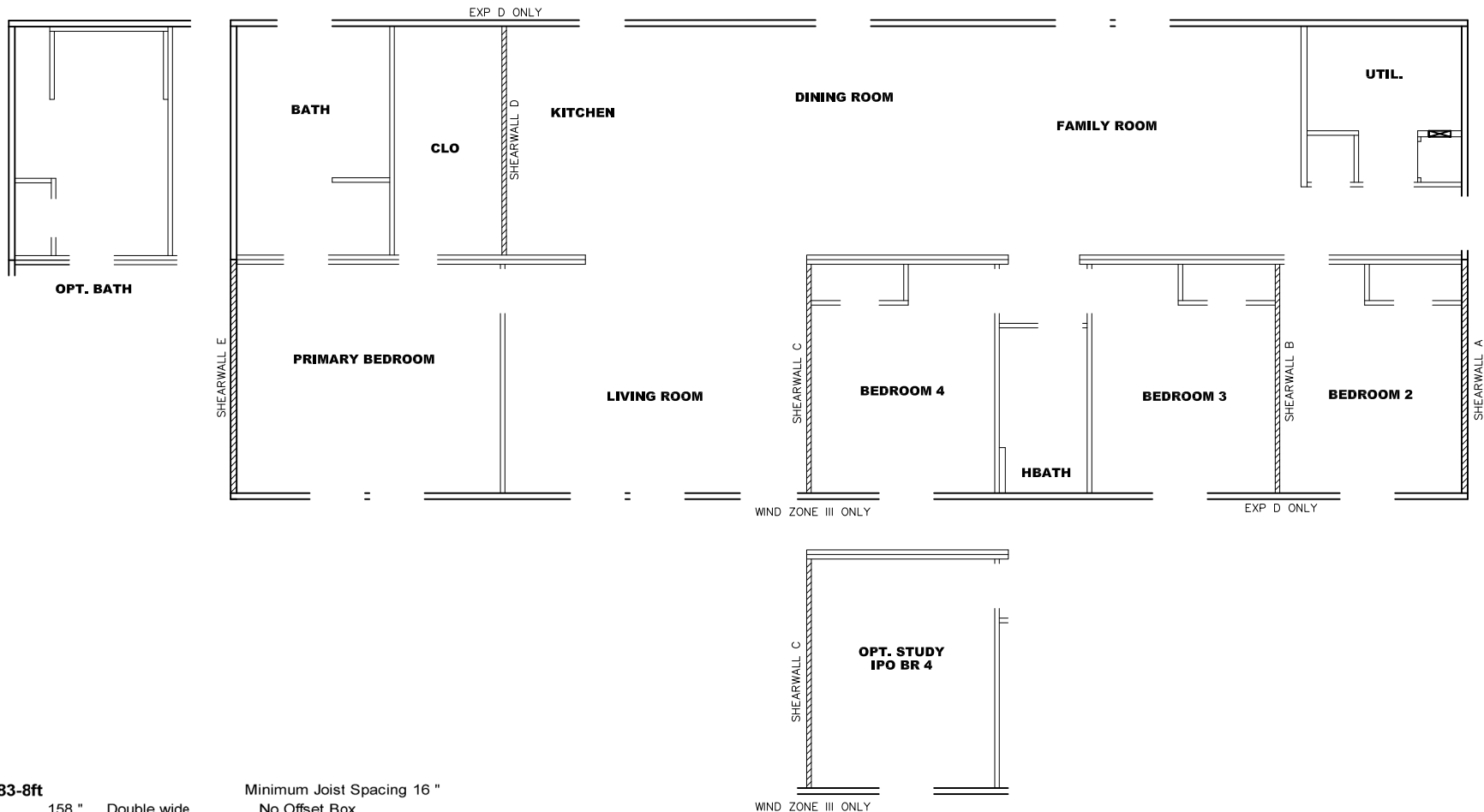
**APPROVED** **HWG** **APPROVED**

17 JAN 2022  
 FP-28-5507

Federal Manufactured  
 Home Construction  
 And Safety Standards

1790 SQ.FT. (STD PLAN "CONDITIONED")  
 N/A SQ.FT. (W/OPT. PORCH/RECESS "CONDITIONED")

<b>CMH</b> MANUFACTURING	Model #: UXL28684A	Drawing #:
	Date: 1/2/2022	Scale: N.T.S.
Product Designer: E. HARDWICK		28x68 Ultra Excel 684
<b>FLOOR PLAN</b>		



**Model # 29m183-8ft** Minimum Joist Spacing 16"  
 Box Width = 158" Double wide No Offset Box  
 Box Length = 68 ft. 95.5" 12" MIN.IBEAM No Clerestory  
 No Skylights No Origami Dormer  
 No Porches No Sunken Floor  
 Joist Size = #2 spf 2x6 Lags 9Mx3" No Parapet Roof

**Version R13.8**

**Wind Zone 1 Standard Roof** (3/8" sheathing only with 15 gax 1.5" at 5"/10" oc. (197 plf) Chords: #3 2x4 plate w/ 2x4 rail spliced w/ 12" glue block. 96 inch sidewall  
 Diaphragm Construction:

Shearwall	Dist./ Hitch	Length	PLF	# of Joists	Lags	Notes
A	0'	Full	162	2	1/1	
E	68'	Full	162	2	1/1	

**Wind Zone 2 Standard Roof** (3/8" & ceiling with 15 gax 1.5" at 5"/10" oc. (267 plf) Chords: #3 2x4 plate w/ 2x4 rail spliced w/ 12" glue block. 96 inch sidewall  
 Diaphragm Construction:

Shearwall	Dist./ Hitch	Length	PLF	# of Joists	Lags	Notes
A	0'	Full	425	2	5/5	
E	68'	Full	425	2	5/5	

**Wind Zone 3 Standard Roof** (3/8" sheathing only with 15 gax 1.5" at 5"/10" oc. (197 plf) Chords: #3 2x4 plate w/ 2x4 rail spliced w/ 12" glue block. 96 inch sidewall  
 Diaphragm Construction:

Shearwall	Dist./ Hitch	Length	PLF	# of Joists	Lags	Notes
A	0'	Full	425	2	5/5	
C	36.21'	Full	515	2	4/4	0.66
E	68'	Full	425	2	5/5	

**Model # 29m183-8ft-EXP D** Minimum Joist Spacing 16"  
 Box Width = 158" Double wide No Offset Box  
 Box Length = 68 ft. 95.5" 12" MIN.IBEAM No Clerestory  
 No Skylights No Origami Dormer  
 No Porches No Sunken Floor  
 Joist Size = #2 spf 2x6 Lags 9Mx3" No Parapet Roof

**Version R13.8**

**WZ 3 Standard Roof Exp D** (3/8" & ceiling with 15 gax 1.5" at 5"/10" oc. (267 plf) Chords: #3 2x4 plate w/ 2x4 rail spliced w/ 12" glue block. 96 inch sidewall  
 Diaphragm Construction:

Shearwall	Dist./ Hitch	Length	PLF	# of Joists	Lags	Notes	% over
A	0'	100"	162	2	2/1		
B	10.46'	128"	425	2	4/1		
C	36.21'	Full	425	2	3/3		0.66
D	52.96'	Full	324	2	2/2		
E	68'	140"	162	2	2/1		

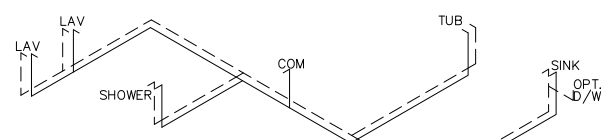
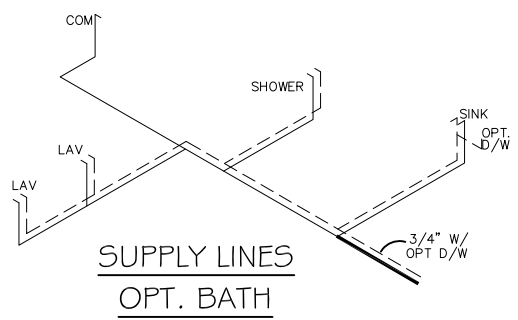
**APPROVED** **IWGC** **APPROVED**  
 17 JAN 2022  
 FP-28-5507  
 Federal Manufactured Home Construction And Safety Standards

1790 SQ.FT. (STD PLAN "CONDITIONED")  
 N/A SQ.FT. (W/OPT. PORCH/RECESS "CONDITIONED")  
**CMH** MANUFACTURING Model #: UXL28684A Drawing #: 29M183  
 Date: 1/28/21 Scale: N.T.S. Product Designer: E. HARDWICK 28x68 Ultra Excel 684  
**8' SHEARWALL**

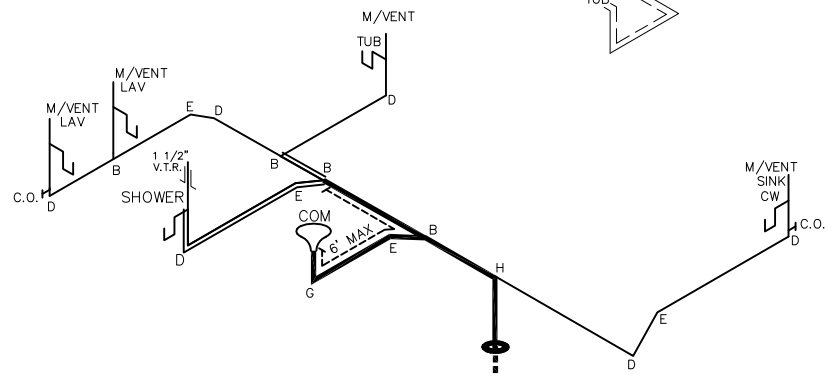
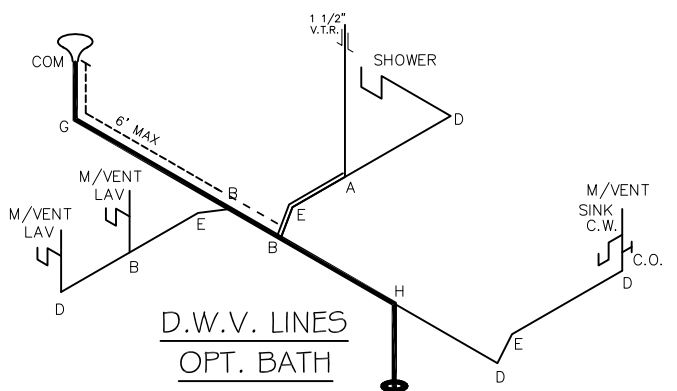
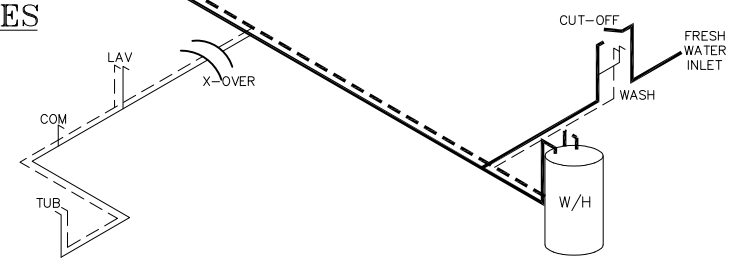
NOTE: WIND ZONE II – PLF 267

NOTE:  
 DASHED LINES INDICATES HOT WATER  
 SOLID LINES INDICATES COLD WATER

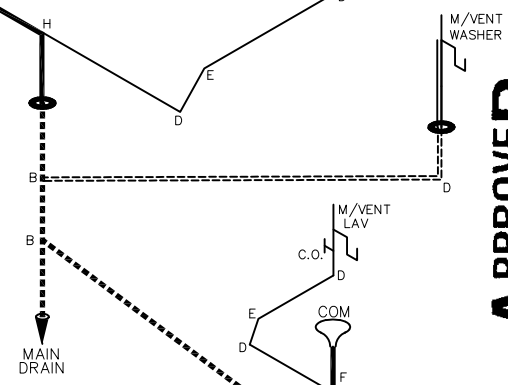
— = 3/4"  
 — = 1/2"



**SUPPLY LINES**



**D.W.V. LINES**



**APPROVED** **HWG** **APPROVED**

17 JAN 2022  
 FP-28-5507

Federal Manufactured  
 Home Construction  
 And Safety Standards

DWV LINE SIZE CHART	
—	= 3"
—	= 2"
—	= 1 1/2"

LEGEND	
A	SHORT TURN T-Y
B	LONG TURN T-Y
C	1/4 BEND
D	LONG SWEEP 1/4 BEND
E	45 ELL
F	DBL. SANITARY TEE
G	4x3 CLOSET ELL
H	DOUBLE ELL
I	22 1/2" ELL
J	45° Y
K	LONG TURN STREET ELBOW
L	45 FTG ELL

1790 SQ.FT. (STD PLAN "CONDITIONED")  
 N/A SQ.FT. (W/OPT. PORCH/RECESS "CONDITIONED")

<b>CMH</b> MANUFACTURING	Model #: UXL28684A Date: 1/2/2021	Drawing #: Scale: N.T.S. 29M183
Product Designer: E. HARDWICK		28x68 Ultra Excel 684

**D.W.V. and Supply Lines**