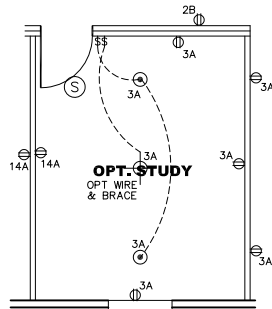
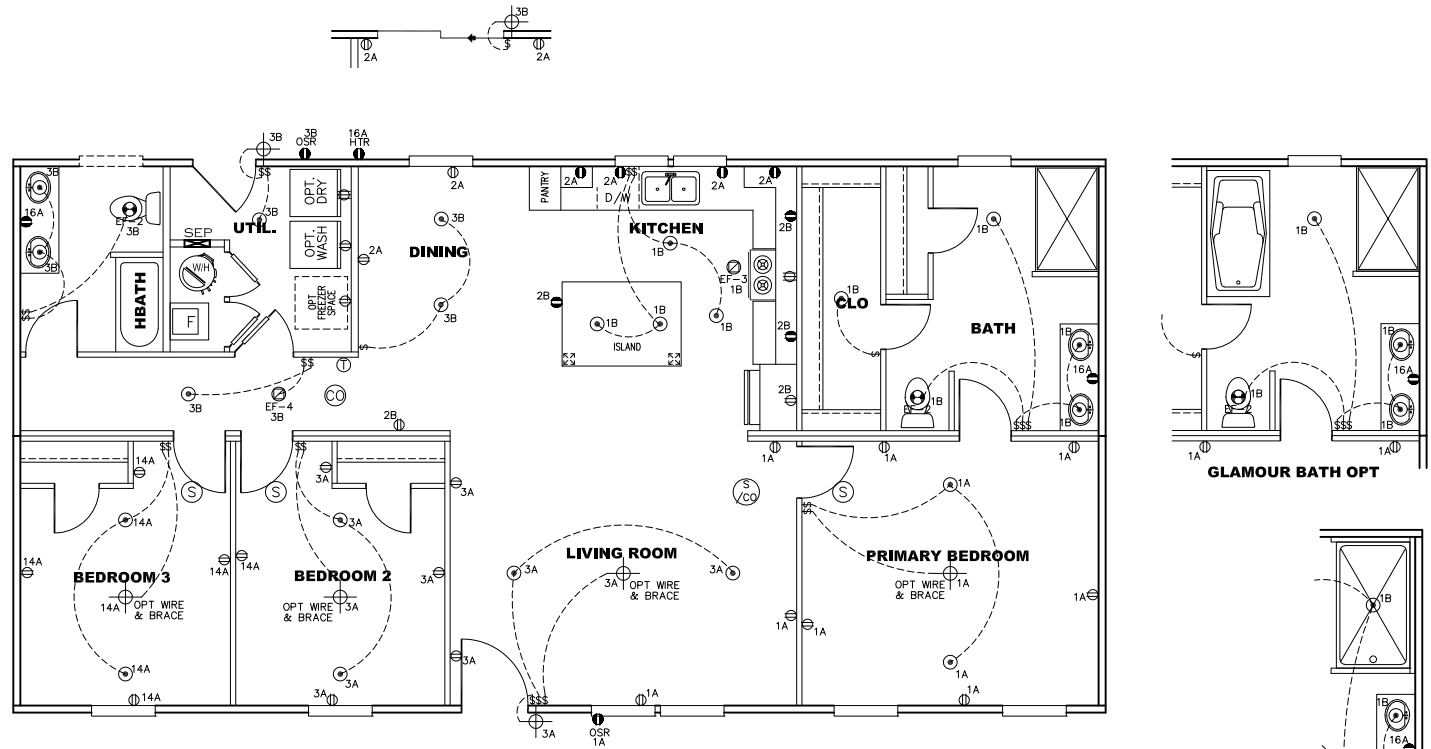


CIRCUIT	CIRCUIT #	WIRE	BREAKER	CIRCUIT	CIRCUIT #	WIRE	BREAKER	CIRCUIT	CIRCUIT #	WIRE	BREAKER
LIGHT/RECEP	1A,1B,3A,3B,14A	14-2	15-SP	WATER HEATER	4A,6B	SEE NOTE #8		BATHROOM	16 A	12-2	20-SP
KITCHEN/DINING	2A,2B	12-2	20-SP	RANGE	5B,7A	SEE NOTE #8		OPT G/DISP	9B	SEE NOTE #8	
WASHER	12A	12-2	20-SP	OPT GAS RANGE	15B	SEE NOTE #8		OPT SPA/ WP/JAC	11A,B	SEE NOTE #8	
DRYER	5A,7B	SEE NOTE #8		FURNACE	6A,8A,B,10A,B	SEE NOTE #8		FREEZER	13A	SEE NOTE #8	
				OPT D/WASH	9A	SEE NOTE #8					
				SMOKE ALARM	4B	SEE NOTE #8					



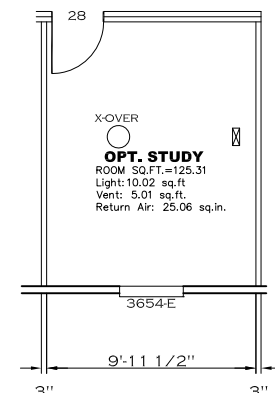
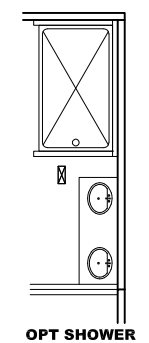
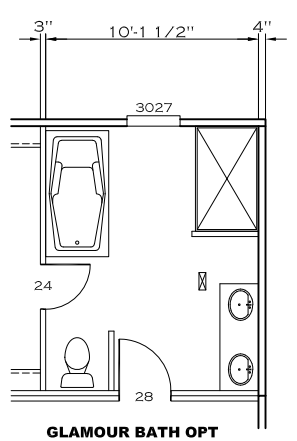
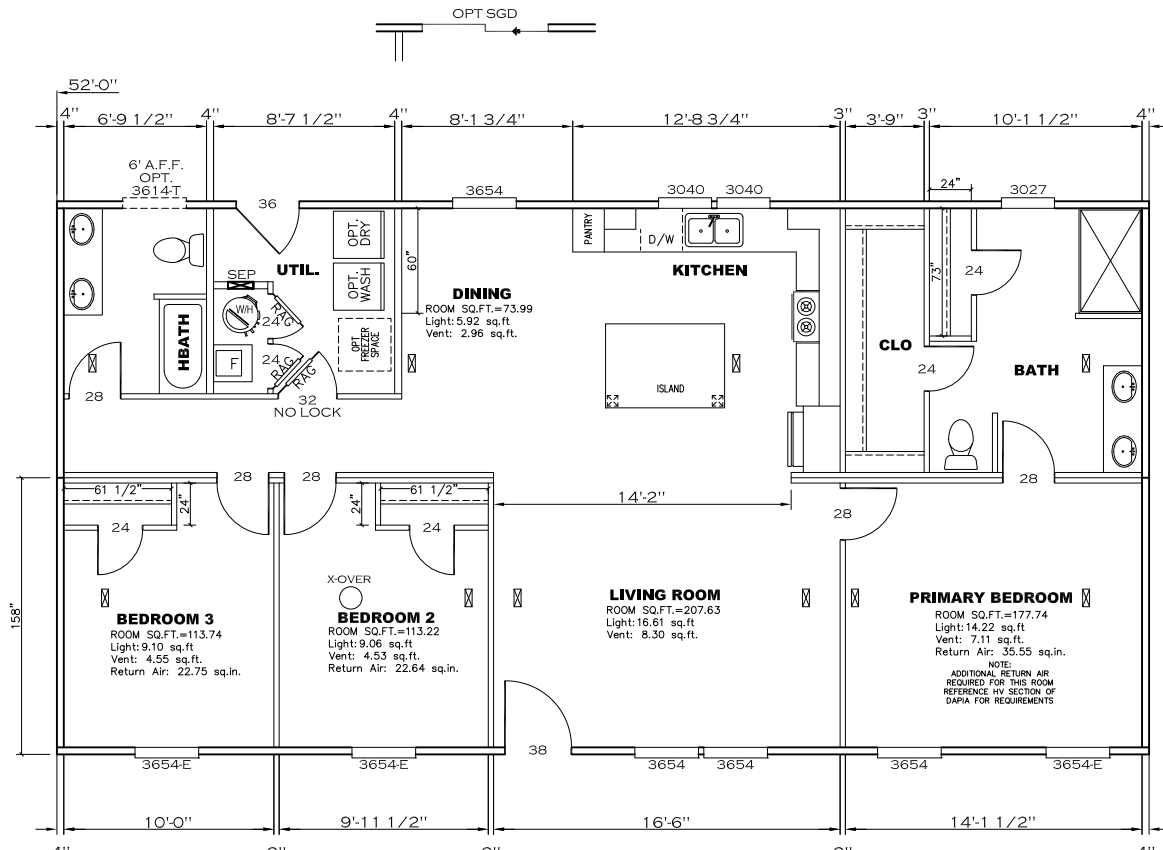
NOTES:

- ALL CIRCUITS SHOWN ARE FOR REFERENCE AND MAY BE CHANGED BASED ON OPTIONAL COMPONENTS INSTALLED IN THE HOME.
- REFER TO DAPIA MANUAL FOR SYMBOL CHART.
- EITHER LIGHT OR RECEPTACLE MUST CONNECT TO SWITCH.
- EF-1= 50 CFM EXHAUST FAN REQUIRED FOR THERMAL ZONE III THERMAL ZONES I & II MAY USE FAN OR WINDOW W/1.5 SQ. FT. OPENABLE GLASS.
- EF-2= 50 CFM EXHAUST FAN REQUIRED THERMAL ZONE I, II, AND III.
- EF-3= 100 CFM RANGE EXHAUST FAN, SWITCH AT HOOD.
- EF-4= WHOLE HOUSE VENTILATION REQUIREMENTS PER DAPIA MANUAL.
- REFER TO DAPIA MANUAL OR THE MFG. INSTALLATION INSTRUCTIONS FOR PROPER WIRE SIZE AND BREAKER SIZE FOR SPECIFIC APPLIANCE AND MODEL BEING INSTALLED.
- ALL SMOKE ALARMS TO BE LOCATED ON THE CEILING.
- CARBON MONOXIDE ALARMS ARE ONLY REQUIRED WHEN HOME HAS EITHER FUEL BURNING APPLIANCES, IS GARAGE READY OR IS BASEMENT READY. REFERENCE DAPIA MANUAL FOR ADDITIONAL INFORMATION.
- DIMENSIONS SHOWN ON PRINT ARE APPROXIMATE AND TO BE USED ONLY AS A GUIDELINE.

**APPROVED** **HWG** **APPROVED**  
 REVISED  
 28 JUN 2023  
 FP-28-5499  
 Federal Manufactured  
 Home Construction  
 And Safety Standards

1369 SQ.FT. (STD PLAN "CONDITIONED")  
 N/A SQ.FT. (W/OPT. PORCH/RECESS "CONDITIONED")

<b>CMH</b> MANUFACTURING	Model #: UBX28523A	Drawing #:
	Date: 11/30/21	Scale: NTS
Product Designer: E HARDWICK	28 X 52 Ultra Breeze Excel 52	
<b>ELECTRICAL PLAN-06</b>		
6 REVISION		ECR-4195 6/23/23 EH



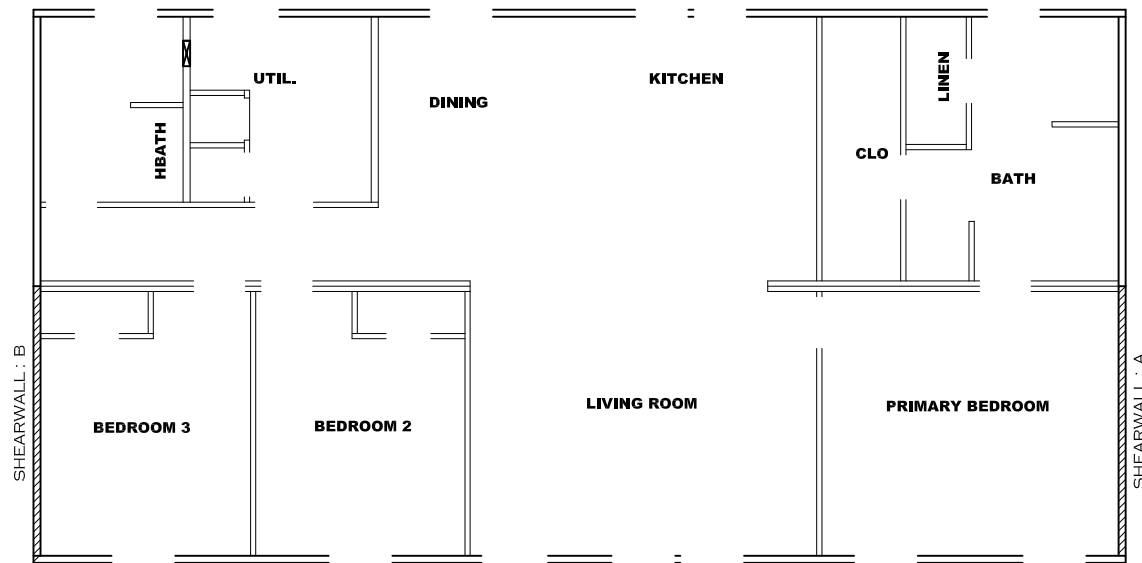
**APPROVED** **HWC** **APPROVED**

REVISED  
28 JUN 2023  
FP-28-5499

Federal Manufactured  
Home Construction  
And Safety Standards

1369 SQ.FT. (STD PLAN "CONDITIONED")  
N/A SQ.FT. (W/OPT. PORCH/RECESS "CONDITIONED")

<b>CMH</b> MANUFACTURING Product Designer: E HARDWICK	Model #: UBX28523A	Drawing #:
	Date: 11/30/21	Scale: NTS
28 X 52 Ultra Breeze Excel 52		
<b>FLOOR PLAN</b>		<b>REVISION</b> ECR-4195 6/23/23 EH



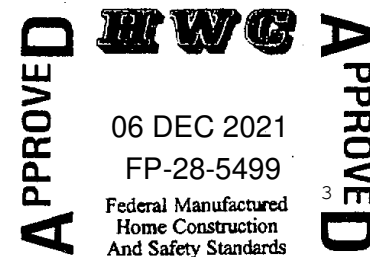
**Model # 29m177-8ft**

Minimum Joist Spacing 16 "

- Box Width = 158 " Double wide No Offset Box
- Box Length = 52 ft. 95.5" 10" MIN. IBEAM No Clerestory
- No Skylights No Origami Dormer
- No Porches No Sunken Floor
- Joist Size = #2 spf 2x6 Lags 9Mx3" No Parapet Roof

**Version R13.8**

<b>Wind Zone 1 Standard Roof</b>		(3/8" sheathing only with 15 gax 1.5" at 5"/10" oc. (197 plf) Chords: #3 2x4 plate w/ 2x4 rail spliced w/ 12" glue block.		96 inch sidewall		
Diaphragm Construction:						
Shearwall	Dist./ Hitch	Length	PLF	# of Joists	Lags	Notes
A	0'	116"	162	2	2/1	
B	52'	116"	162	2	2/1	
<b>Wind Zone 2 Standard Roof</b>		(3/8" sheathing only with 15 gax 1.5" at 5"/10" oc. (197 plf) Chords: #3 2x4 plate w/ 2x4 rail spliced w/ 12" glue block.		96 inch sidewall		
Diaphragm Construction:						
Shearwall	Dist./ Hitch	Length	PLF	# of Joists	Lags	Notes
A	0'	Full	425	2	5/5	
B	52'	Full	425	2	5/5	
<b>Wind Zone 3 Standard Roof</b>		(3/8" sheathing only with 15 gax 1.5" at 5"/10" oc. (197 plf) Chords: #3 2x4 plate w/ 2x4 rail spliced w/ 12" glue block.		96 inch sidewall		
Diaphragm Construction:						
Shearwall	Dist./ Hitch	Length	PLF	# of Joists	Lags	Notes
A	0'	Full	425	2	5/5	
B	52'	Full	425	2	5/5	

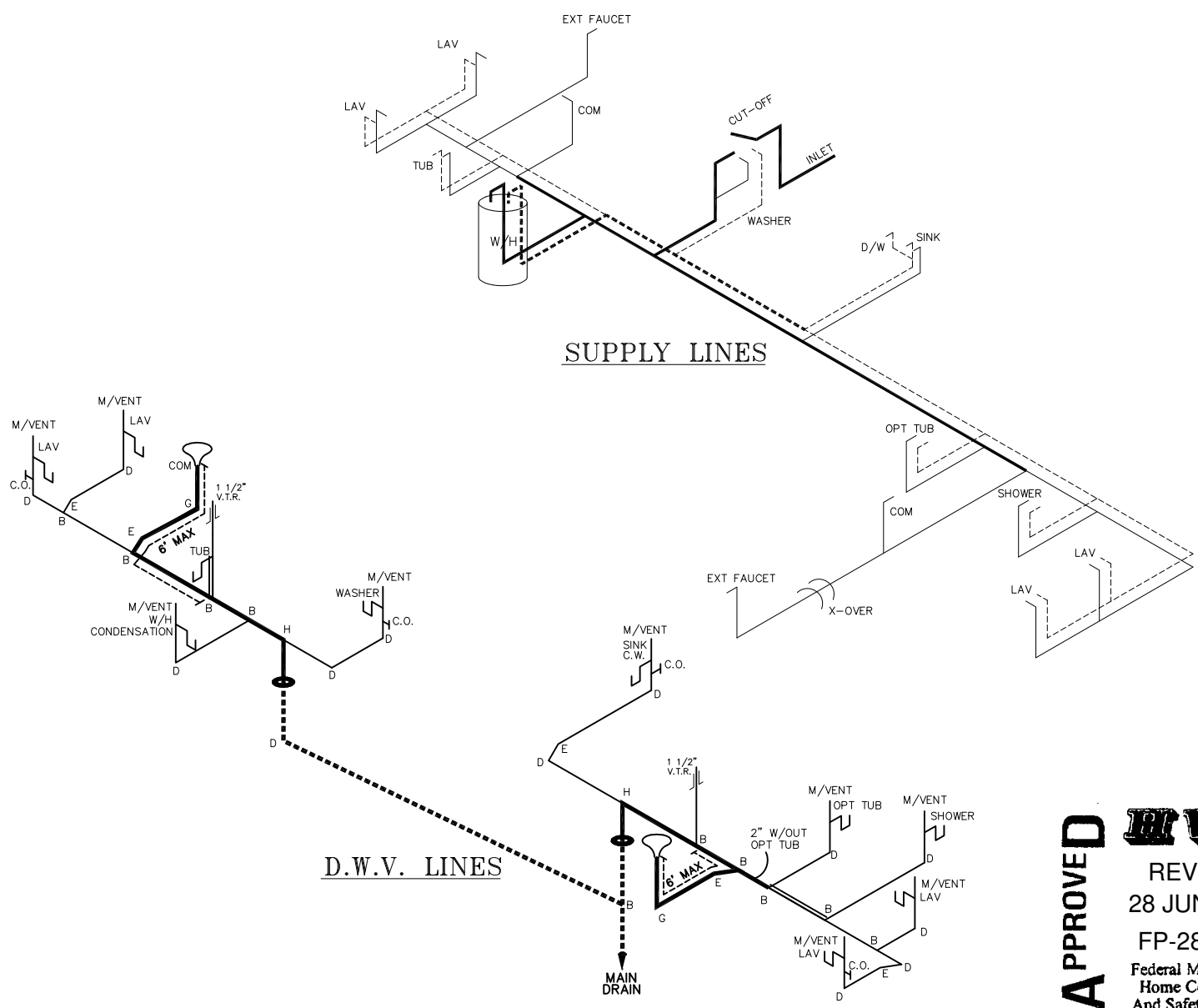


1369 SQ.FT. (STD PLAN "CONDITIONED")  
 N/A SQ.FT. (W/OPT. PORCH/RECESS "CONDITIONED")

<b>CMH</b> MANUFACTURING	Model #: UBX28523A Date: 11/30/21   Scale: NTS	Drawing #: 29m177
Product Designer: E HARDWICK		28 X 52 Ultra Breeze Excel 52
<b>8' SHEARWALL</b>		

NOTE:  
DASHED LINES INDICATE HOT WATER  
SOLID LINES INDICATE COLD WATER

— = 3/4"  
— = 1/2"



**APPROVED** **HWG** **APPROVED**  
 REVISED  
 28 JUN 2023  
 FP-28-5499  
 Federal Manufactured  
 Home Construction  
 And Safety Standards

LEGEND	
A	SHORT TURN T-Y
B	LONG TURN T-Y
C	1/4 BEND
D	LONG SWEEP 1/4 BEND
E	45 ELL
F	DBL. SANITARY TEE
G	4x3 CLOSET ELL
H	DOUBLE ELL
I	22 1/2" ELL
J	45° Y
K	LONG TURN STREET ELBOW
	45° FTG. ELL

DWV LINE SIZE CHART	
—	= 3"
—	= 2"
—	= 1 1/2"

1369 SQ.FT. (STD PLAN "CONDITIONED")  
 N/A SQ.FT. (W/OPT. PORCH/RECESS "CONDITIONED")

<b>CMH</b> MANUFACTURING Product Designer: E HARDWICK	Model #: UBX28523A Date: 11/30/21   Scale: NTS	Drawing #: 29m177
	28 X 52 Ultra Breeze Excel 52	
<b>D.W.V. and Supply Lines</b>		3 REVISION ECR-4196 6/23/23 BH