

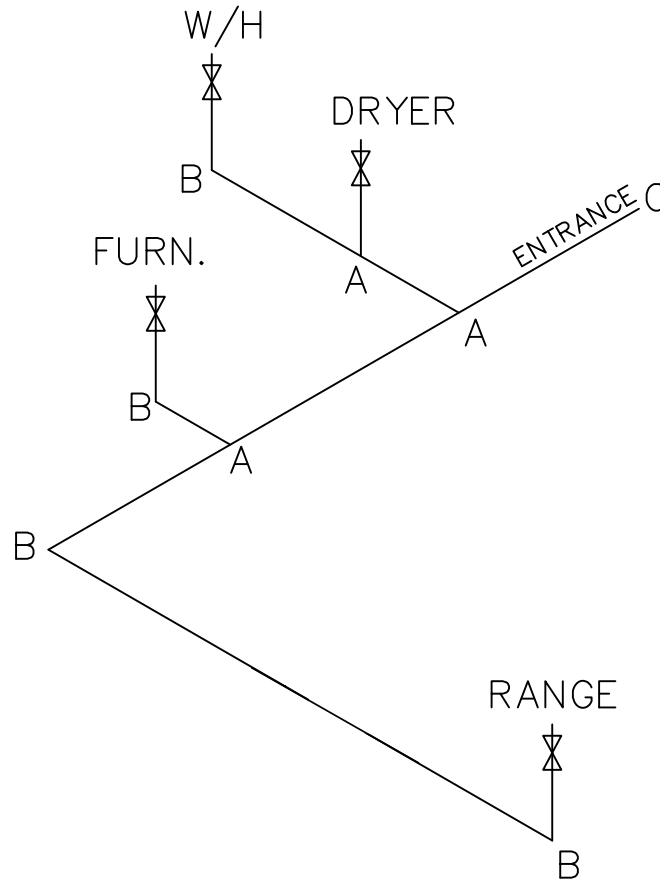
APPROVED **HWC** **APPROVED**

21 APR 2020
FP-16-2898
Federal Manufactured
Home Construction
And Safety Standards

981 SQ.FT. (STD PLAN "CONDITIONED")		N/A SQ.FT. (W/OPT. PORCH/RECESS "CONDITIONED")	
CMH MANUFACTURING	Model #: ULT16643C Date: 4/15/20	Scale: NTS	Drawing #: 295106
Product Designer: E. HARDWICK		16 x G4 ULTRA PRO	
FLOOR PLAN			

LEGEND		APPLIANCE BTU's RATINGS MAX. INPUT	
SYM	FITTINGS		
A	TEE	FURNACE	70,000 BTU'S
B	90 ELL	W/H	37,000 BTU'S
X	VALVE	RANGE	54,000 BTU'S
C	CAP	DRYER	22,000 BTU'S

MDL=23'

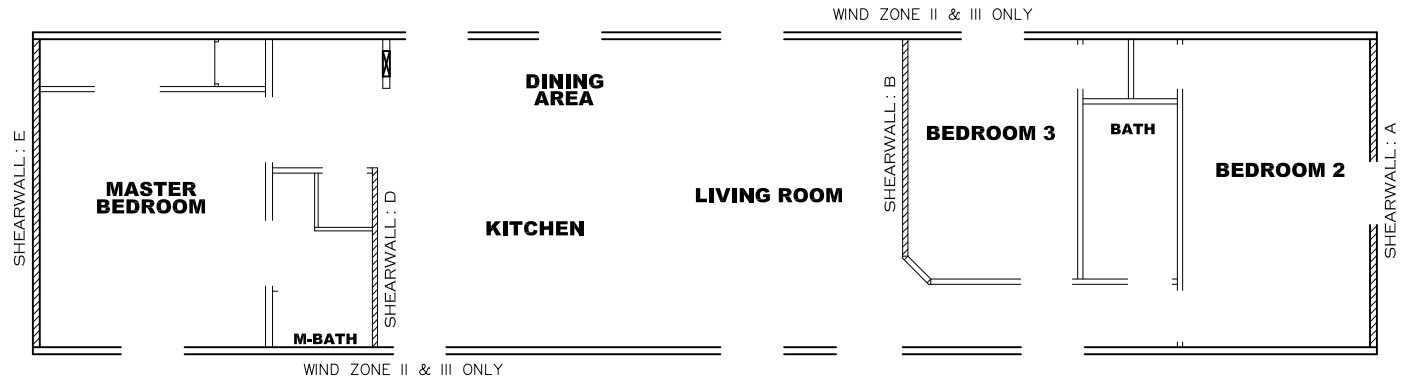


- NOTES:
- 1) ALL PIPE IS 3/4" I.D.CAST (EXCEPT WHERE NOTED OTHERWISE)
 - 2) MDL=MAX. DETERMINED LENGTH OF PIPE
 - 3) FITTING MAY BE ADDED OR SUBTRACTED TO TRAVERSE VARIATIONS IN AXLE QUANTITY, PLACEMENT, AND FRAME TYPE.
 - 4) INLET LOCATION MAY VARY TO STAY WITHIN MAX. DETERMINED LENGTH

APPROVED
HWG
APPROVED
 21 APR 2020
 FP-16-2898
 Federal Manufactured
 Home Construction
 And Safety Standards

GAS LINE SIZE CHART	
— (thick line)	= 1"
— (thin line)	= 3/4"

981 SQ.FT. (STD PLAN "CONDITIONED")	
N/A SQ.FT. (W/OPT. PORCH/RECESS "CONDITIONED")	
CMH MANUFACTURING	Model #: ULT16643C Date: 4/15/20 Scale: NTS
Product Designer: E. HARDWICK	Drawing #: 295106
16 x 64 ULTRA PRO	
GAS LINE DETAIL	



Model # 29s106-8ft

Minimum Joist Spacing 16 "

Box Width = 184 " Single wide No Offset Box
 Box Length = 64 ft. 95.5" 12" MIN. IBEAM No Clerestory
 No Skylights No Origami Dormer
 No Porches No Sunken Floor
 Joist Size = #2 spf 2x6 Lags 9Mx3" No Parapet Roof

Version R13.8

Wind Zone 1 Standard Roof (3/8" sheathing only with 15 gax 1.5" at 5"/10" oc. (197 plf) Chords: #3 2x4 plate w/ 2x4 rail spliced w/ 12" glue block. 96 inch sidewall

Shearwall	Dist./ Hitch	Length	PLF	# of Joists	Lags	Notes	SW1/SW2
A	0'	139.625"	425	6	5/5	Split Shearwall	69.75/69.87
E	64'	144"	162	2	2/1		

Wind Zone 2 Standard Roof (3/8" sheathing only with 15 gax 1.5" at 5"/10" oc. (197 plf) Chords: #3 2x4 plate w/ 2x4 rail spliced w/ 12" glue block. 96 inch sidewall

Shearwall	Dist./ Hitch	Length	PLF	# of Joists	Lags	Notes	SW1/SW2
A	0'	139.625"	162	2	2/2	Split Shearwall	69.75/69.87
B	22.46'	120"	425	4	4/1		
D	47.71'	92"	425	6	3/1		
E	64'	96"	162	2	1/1		

Wind Zone 3 Standard Roof (3/8" sheathing only with 15 gax 1.5" at 5"/10" oc. (197 plf) Chords: #3 2x4 plate w/ 2x4 rail spliced w/ 12" glue block. 96 inch sidewall

Shearwall	Dist./ Hitch	Length	PLF	# of Joists	Lags	Notes	SW1/SW2
A	0'	139.625"	425	6	5/5	Split Shearwall	69.75/69.87
B	22.46'	120"	515	5	5/2		
D	47.71'	92"	515	9	3/1		
E	64'	116"	162	2	2/1		



Model # 29s106-8ft-2BR OPT

Minimum Joist Spacing 16 "

Box Width = 184 " Single wide No Offset Box
 Box Length = 64 ft. 95.5" 12" MIN. IBEAM No Clerestory
 No Skylights No Origami Dormer
 No Porches No Sunken Floor
 Joist Size = #2 spf 2x6 Lags 9Mx3" No Parapet Roof

Version R13.8

Wind Zone 1 Standard Roof (3/8" sheathing only with 15 gax 1.5" at 5"/10" oc. (197 plf) Chords: #3 2x4 plate w/ 2x4 rail spliced w/ 12" glue block. 96 inch sidewall

Shearwall	Dist./ Hitch	Length	PLF	# of Joists	Lags	Notes	SW1/SW2
A	0'	129.625"	425	6	5/5	Split Shearwall	64.875/64.7
E	64'	144"	162	2	2/1		

Wind Zone 2 Standard Roof (3/8" sheathing only with 15 gax 1.5" at 5"/10" oc. (197 plf) Chords: #3 2x4 plate w/ 2x4 rail spliced w/ 12" glue block. 96 inch sidewall

Shearwall	Dist./ Hitch	Length	PLF	# of Joists	Lags	Notes	SW1/SW2
A	0'	129.625"	162	2	2/2	Split Shearwall	64.875/64.7
B	16.21'	140"	324	2	3/1		
D	47.71'	88"	515	9	3/1		
E	64'	96"	162	2	1/1		

Wind Zone 3 Standard Roof (3/8" sheathing only with 15 gax 1.5" at 5"/10" oc. (197 plf) Chords: #3 2x4 plate w/ 2x4 rail spliced w/ 12" glue block. 96 inch sidewall

Shearwall	Dist./ Hitch	Length	PLF	# of Joists	Lags	Notes	SW1/SW2
A	0'	129.625"	162	2	2/2	Split Shearwall	64.875/64.7
B	16.21'	120"	324	2	3/1		
C	33.69'	80"	515	6	3/3	Split Shearwall	30/50
D	47.71'	96"	425	8	3/2		
E	64'	116"	162	2	2/1		



APPROVED **HWC** **APPROVED**

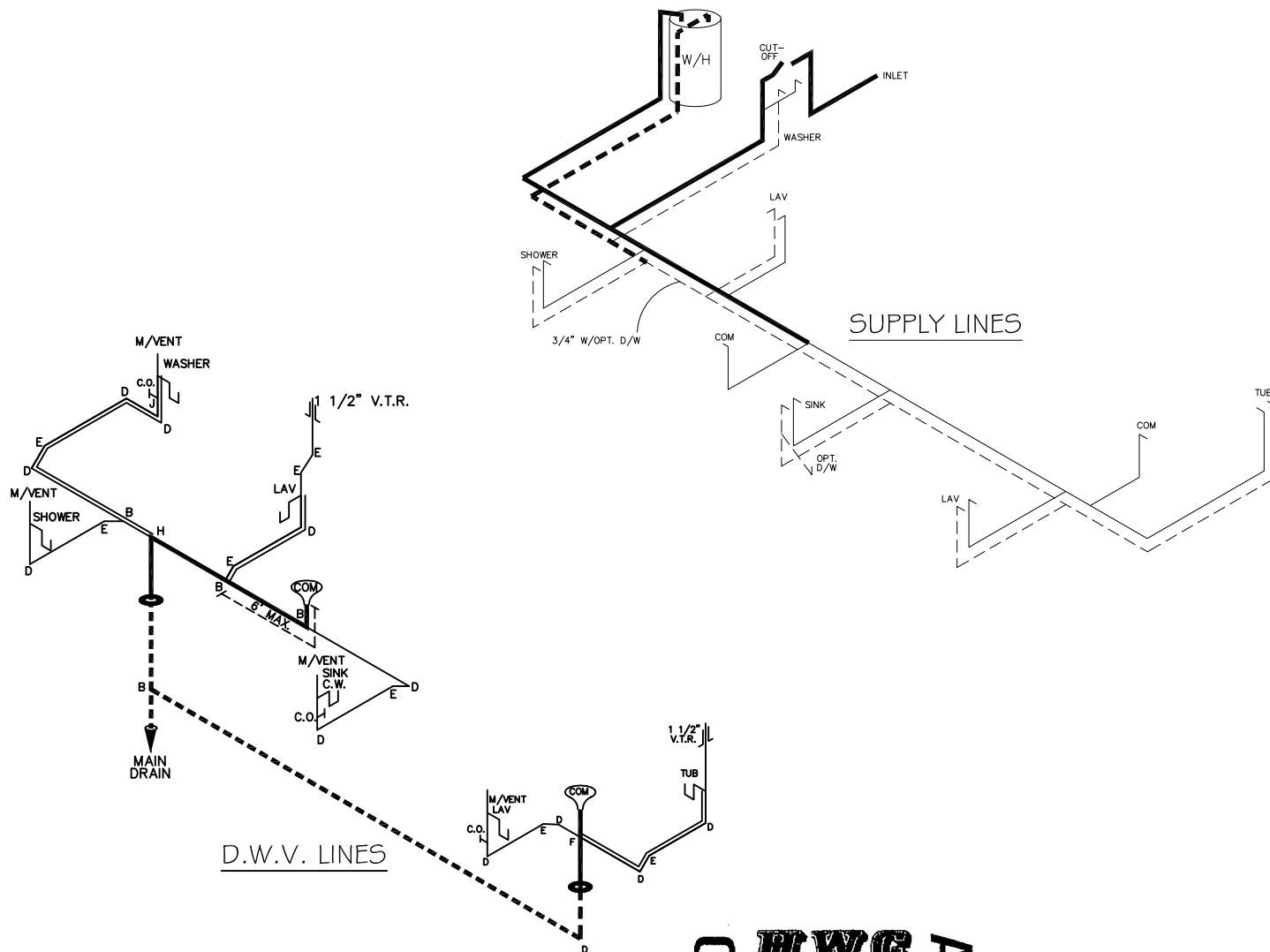
21 APR 2020
 FP-16-2898
 Federal Manufactured Home Construction And Safety Standards

981 SQ.FT. (STD PLAN "CONDITIONED")
 N/A SQ.FT. (W/OPT. PORCH/RECESS "CONDITIONED")




CMH MANUFACTURING	Model #: ULT16643C	Drawing #:
	Date: 4/15/20	Scale: NTS 295106
Product Designer: E. HARDWICK		16 x 64 ULTRA PRO
8' SHEARWALL		

NOTE:
 DASHED LINES INDICATES HOT WATER
 SOLID LINES INDICATES COLD WATER

 = 3/4"
 = 1/2"



LEGEND	
A	SHORT TURN T-Y
B	LONG TURN T-Y
C	1/4 BEND
D	LONG SWEEP 1/4 BEND
E	45 ELL
F	DBL. SANITARY TEE
G	4x3 CLOSET ELL
H	DOUBLE ELL
I	22 1/2° ELL
J	45° Y
K	LONG TURN STREET ELBOW
L	45 FTG ELL

D.W.V. LINE SIZE CHART	
	= 3"
	= 2"
	= 1 1/2"

APPROVED **HWC** **APPROVED**
 21 APR 2020
 FP-16-2898
 Federal Manufactured
 Home Construction
 And Safety Standards

981 SQ.FT. (STD PLAN "CONDITIONED")	
N/A SQ.FT. (W/OPT. PORCH/RECESS "CONDITIONED")	
CMH MANUFACTURING	Model #: ULT16643C Date: 4/15/20 Scale: NTS
Product Designer: E. HARDWICK	Drawing #: 295106
16 x 64 ULTRA PRO	
D.W.V. and Supply Lines	