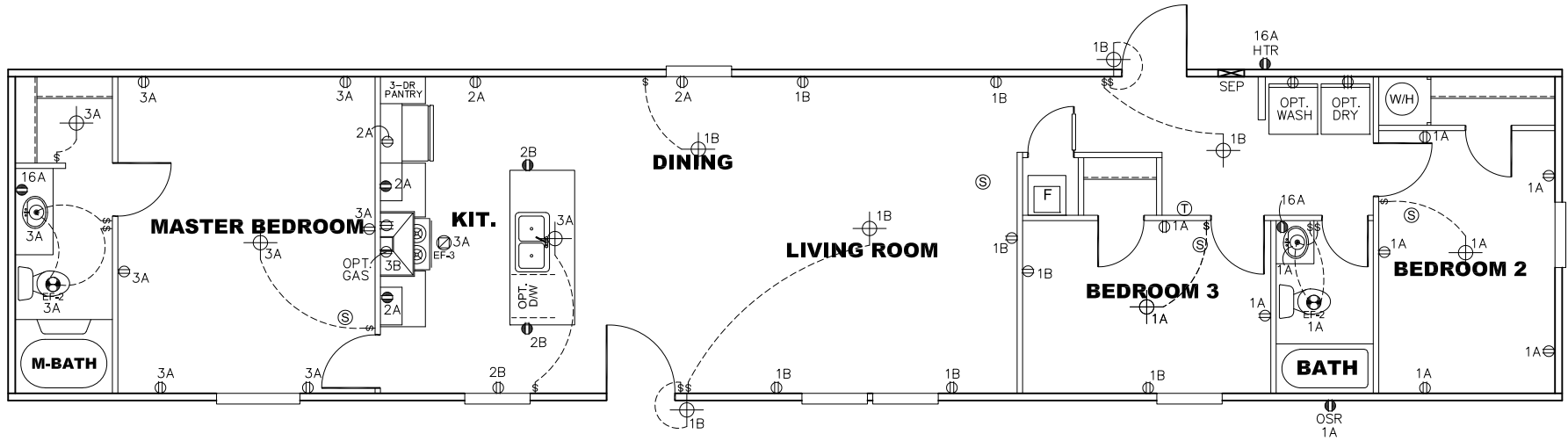


CIRCUIT	CIRCUIT #	WIRE	BREAKER	CIRCUIT	CIRCUIT #	WIRE	BREAKER	CIRCUIT	CIRCUIT #	WIRE	BREAKER
LIGHT/RECEP	1A, 1B, 3A, 3B	14-2	15-SP	WATER HEATER	4A, 6B	SEE NOTE #8		BATHROOM	16A	12-2	20-SP
KITCHEN/DINING	2A, 2B	12-2	20-SP	RANGE	5B, 7A	SEE NOTE #8		OPT G/D/ISP	9B	SEE NOTE #8	
WASHER	12A	12-2	20-SP	FURNACE	6A, 8A, B, 10A, B	SEE NOTE #8		OPT SPA/ WP/JAC	11A, B	SEE NOTE #8	
DRYER	5A, 7B	SEE NOTE #8		OPT D/WASH	9A	SEE NOTE #8		FREEZER	13A	SEE NOTE #8	
				SMOKE ALARM	4B	SEE NOTE #8					



NOTES:

- ALL CIRCUITS SHOWN ARE FOR REFERENCE AND MAY BE CHANGED BASED ON OPTIONAL COMPONENTS INSTALLED IN THE HOME.
- REFER TO EL SECTION OF THE DAPIA FOR SYMBOL CHART.
- EITHER LIGHT OR RECEPTACLE MUST CONNECT TO SWITCH.
- EF-1= 50 CFM EXHAUST FAN REQUIRED FOR THERMAL ZONE III
THERMAL ZONES I & II MAY USE FAN OR WINDOW W/1.5 SQ. FT. OPENABLE GLASS.
- EF-2= 50 CFM EXHAUST FAN REQUIRED THERMAL ZONE I, II, AND III.
- EF-3= 100 CFM RANGE EXHAUST FAN, SWITCH AT HOOD.
- EF-4= WHOLE HOUSE VENTILATION PER REQUIREMENTS IN S-HV-10 & 10A OR M-HV-11 & 11A OF DAPIA.
- REFER TO EL SECTION OF THE DAPIA OR THE MFG. INSTALLATION INSTRUCTIONS FOR PROPER WIRE SIZE AND BREAKER SIZE FOR SPECIFIC APPLIANCE AND MODEL BEING INSTALLED.
- ALL SMOKE ALARMS TO BE LOCATED ON THE CEILING.
- DIMENSIONS SHOWN ON PRINT ARE APPROXIMATE AND TO BE USED ONLY AS A GUIDELINE.

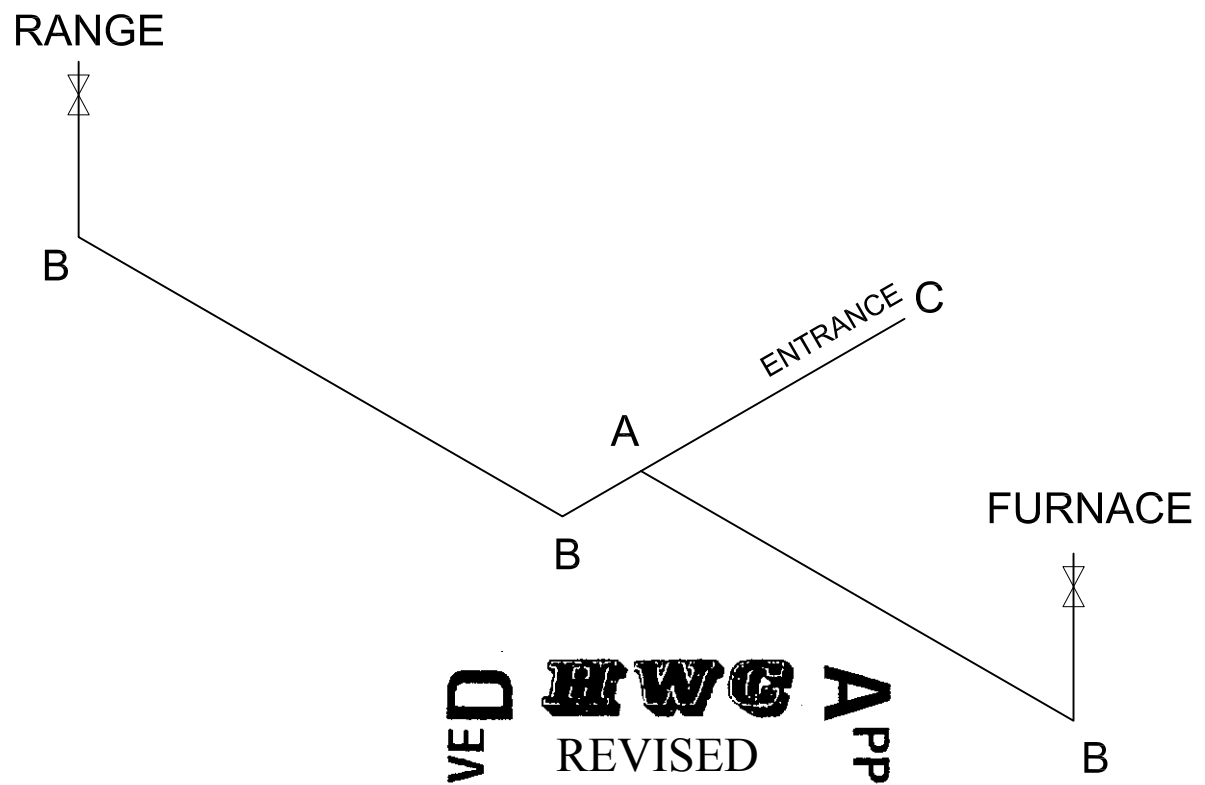
APPROVED **HWC** **APPROVED**
REVISED
MAR 05 2020
.FP-16-2104
Federal Manufactured Home Construction And Safety Standards

1104 SQ.FT. (STD PLAN "CONDITIONED")
N/A SQ.FT. (W/OPT. PORCH/RECESS "CONDITIONED")

CMH MANUFACTURING	Model #: SSP16723A185	Drawing #:
	Date: 5/30/14 Scale: N/A	29-115044-OVERHANG
Product Designer: HARMONB		16' x 72' The Breeze
ELECTRICAL PLAN-06		7 REVISION ECR-675882 8/21/18 EH

LEGEND		APPLIANCE BTU'S RATINGS MAX. INPUT		
SYM	FITTINGS			
A	TEE	FURNACE	65,000	BTU'S
B	90 ELL	W/H	N/A	BTU'S
X	VALVE	RANGE	52,000	BTU'S
C	CAP	DRYER	N/A	BTU'S

MDL= 30'



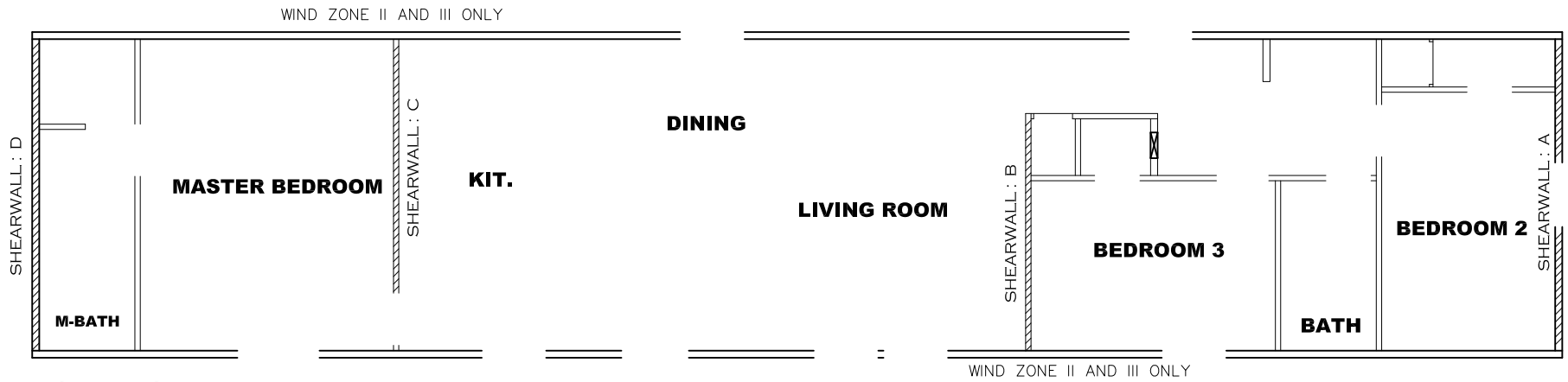
- NOTES:
- 1) ALL PIPE IS 3/4" I.D.CAST (EXCEPT WHERE NOTED OTHERWISE)
 - 2) MDL=MAX. DETERMINED LENGTH OF PIPE
 - 3) FITTING MAY BE ADDED OR SUBTRACTED TO TRAVERSE VARIATIONS IN AXLE QUANTITY, PLACEMENT, AND FRAME TYPE.
 - 4) INLET LOCATION MAY VARY TO STAY WITHIN MAX. DETERMINED LENGTH

APPROVED
HWG
 REVISED
 JULY 6 2018
 Federal Manufactured
 Home Construction
 And Safety Standards
APPROVED

GAS LINE SIZE CHART	
	= 1"
	= 3/4"

FP-16-2104

1104 SQ.FT. (STD PLAN "CONDITIONED")	
N/A SQ.FT. (W/OPT. PORCH/RECESS "CONDITIONED")	
CMH MANUFACTURING	Model #: SSP16723A185 Date: 5/30/14 Scale: N/A
Product Designer: HARMONB	Drawing #: 29-115044-OVERHANG
16' x 72' The Breeze	
GAS LINE DETAIL	
REVISION ECR-432389 2/3/17 BH	



Model # 29-11s044-Overhang-8ft Minimum Joist Spacing 16 "

Box Width = 184 " Single wide No Offset Box

Box Length = 72 ft. 95.5" 12" MIN.IBEAM No Clerestory

No Skylights No Origami Dormer

No Porches No Sunken Floor

Joist Size = #2 sp 2x6 Lags 9Mx3" No Parapet Roof

Version R13.13

Wind Zone 1 Standard Roof (3/8" sheathing only with 15 gax 1.5" at 5'/10" oc. (197 plf) Chords: 2x4 SPF #3 Top Plate & 2x4 Rail. Each spliced w/ 12" glue block. 96 inch sidewall

Shearwall	Dist./ Hitch	Length	PLF	# of Joists	Lags	Notes	SW1/SW2
A	0'	139.625 "	425	2	4/4	Split Shearwall *	69.75/69.87.
D	72'	160 "	162	2	2/1		

Wind Zone 2 Standard Roof (3/8" sheathing only with 15 gax 1.5" at 5'/10" oc. (197 plf) Chords: 2x4 SPF #3 Top Plate & 2x4 Rail. Each spliced w/ 12" glue block. 96 inch sidewall

Shearwall	Dist./ Hitch	Length	PLF	# of Joists	Lags	Notes	SW1/SW2
A	0'	139.625 "	425	2	4/4	Split Shearwall *	69.75/69.87.
B	25.13'	124 "	425	3	4/1		
C	54.88'	136 "	324	2	3/1		
D	72.01'	100 "	162	2	1/1		

Wind Zone 3 Standard Roof (3/8" sheathing only with 15 gax 1.5" at 5'/10" oc. (197 plf) Chords: 2x4 SPF #3 Top Plate & 2x4 Rail. Each spliced w/ 12" glue block. 96 inch sidewall

Shearwall	Dist./ Hitch	Length	PLF	# of Joists	Lags	Notes	SW1/SW2
A	0'	139.625 "	425	2	4/4	Split Shearwall *	69.75/69.87.
B	25.13'	128 "	515	3	5/2		
C	54.88'	136 "	425	2	4/1		
D	72.01'	120 "	162	2	2/1		

* Denotes that indicated shear wall is over full depth/w idth front steel chassis header.

APPROVED

I W C
REVISED
AUG-9 2018
FP-16-2104

APPROVED

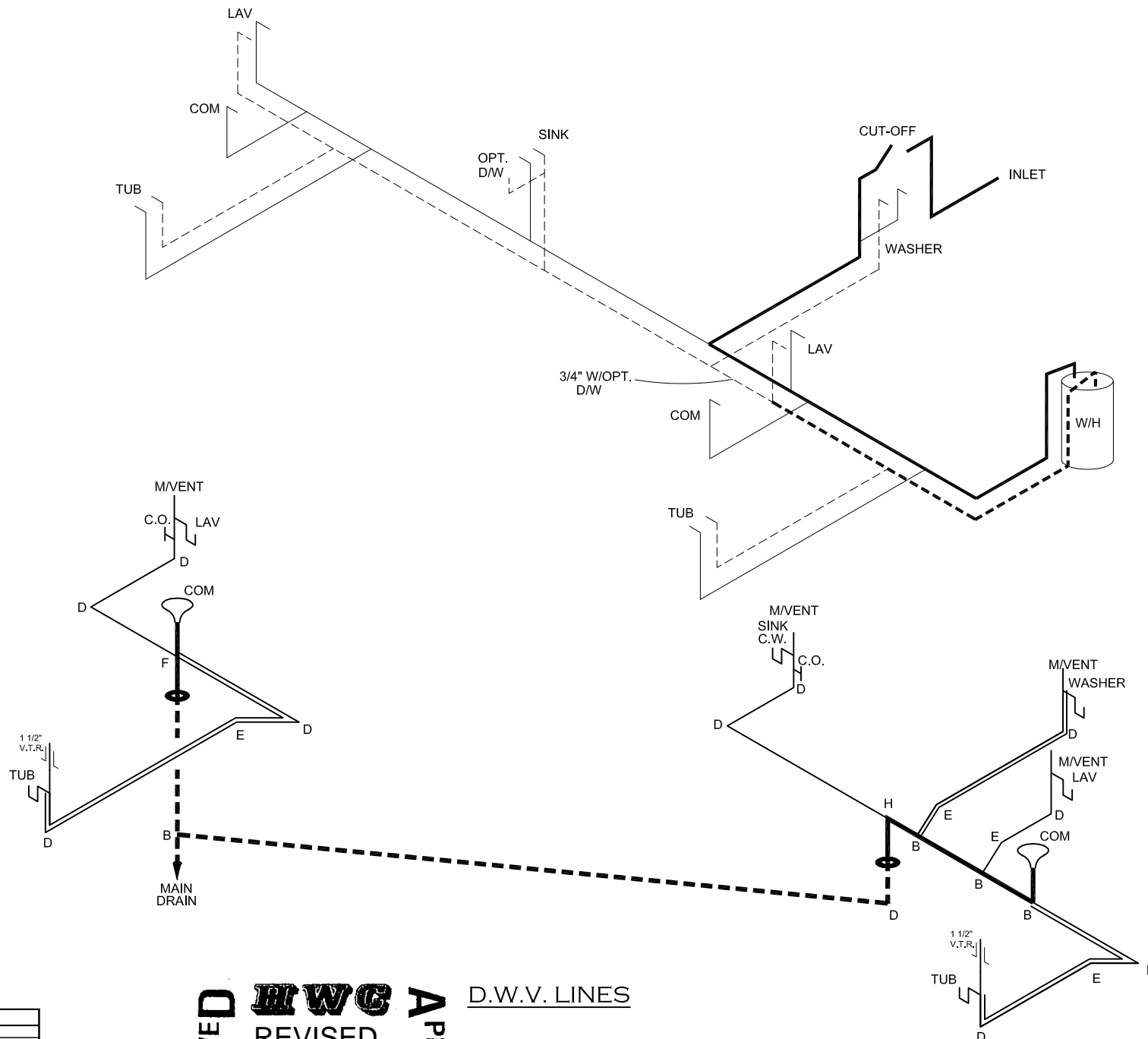
Federal Manufactured
Home Construction
And Safety Standards

1104 SQ.FT. (STD PLAN "CONDITIONED")
N/A SQ.FT. (W/OPT. PORCH/RECESS "CONDITIONED")

CMH MANUFACTURING	Model #: SSP16723A185	Drawing #:
	Date: 5/30/14 Scale: N/A	29-115044-OVERHANG
Product Designer: HARMONB	16' x 72' The Breeze	
SHEARWALL PAGE		6 REVISION ECR-668852 8/8/18 EH

NOTE:
DASHED LINES INDICATE HOT WATER
SOLID LINES INDICATE COLD WATER

———— = 3/4"
———— = 1/2"



LEGEND	
A	SHORT TURN T-Y
B	LONG TURN T-Y
C	1/4 BEND
D	LONG SWEEP 1/4 BEND
E	45 ELL
F	DBL. SANITARY TEE
G	4x3 CLOSET ELL
H	DOUBLE ELL
I	22 1/2° ELL
J	45° Y
K	LONG TURN STREET ELBOW
L	45 FTG ELL

DWV LINE SIZE CHART	
————	= 3"
————	= 2"
————	= 1 1/2"

APPROVED **HWC** **APPROVED**
REVISED
25 NOV 2019
FP-16-2104
 Federal Manufactured
 Home Construction
 And Safety Standards

D.W.V. LINES

1104 SQ.FT. (STD PLAN "CONDITIONED")
 N/A SQ.FT. (W/OPT. PORCH/RECESS "CONDITIONED")

CMH MANUFACTURING Product Designer: HARMONB	Model #: SSP16723A185 Date: 5/30/14 Scale: N/A	Drawing #: 29-115044-OVERHANG
	16' x 72' The Breeze	
D.W.V. and Supply Lines		REVISION ECR-432989 2/3/17 BH