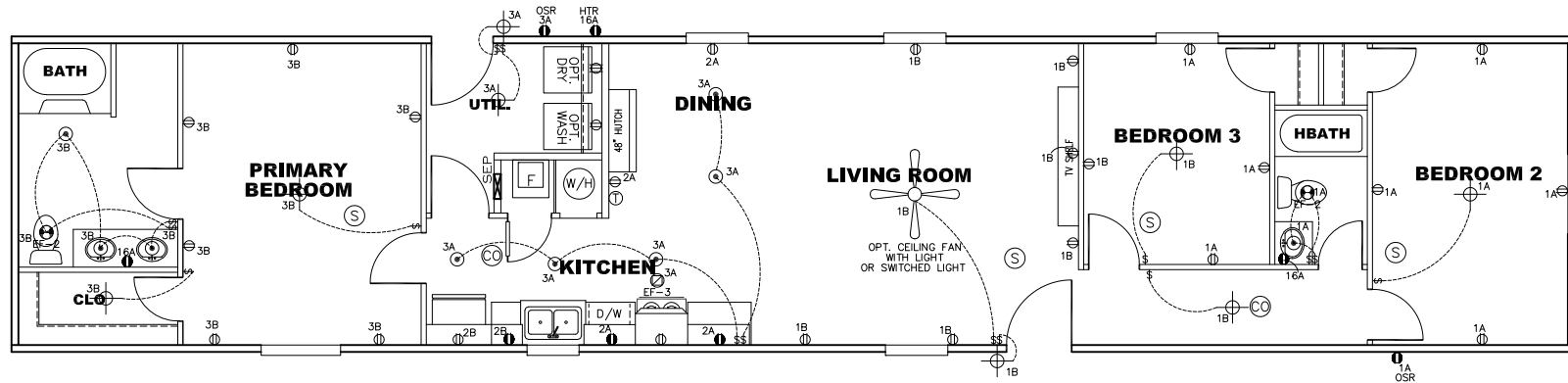


CIRCUIT	CIRCUIT #	WIRE	BREAKER	CIRCUIT	CIRCUIT #	WIRE	BREAKER	CIRCUIT	CIRCUIT #	WIRE	BREAKER
LIGHT/RECEP	1A,1B,3A,3B	14-2	15-SP	WATER HEATER	4A,6B	SEE NOTE #8		BATHROOM	16A	12-2	20-SP
KITCHEN	2A,2B	12-2	20-SP	RANGE	5B,7A	SEE NOTE #8		OPT G/DISP	9B	SEE NOTE #8	
WASHER	12A	12-2	20-SP	FURNACE	6A,8A,B,10A,B	SEE NOTE #8		OPT SPA/WP/JAC	11A,B	SEE NOTE #8	
DRYER	5A,7B	SEE NOTE #8		OPT D/WASH	9A	SEE NOTE #8		FREEZER	N/A	SEE NOTE #8	
				SMOKE ALARM	4B	SEE NOTE #8					

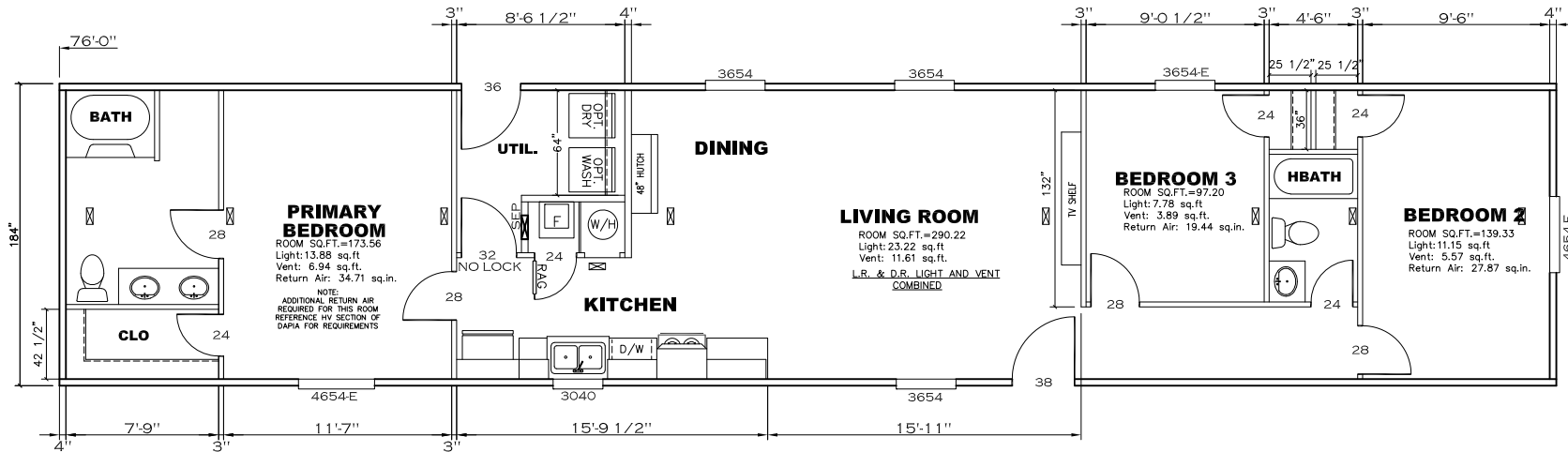


NOTES:

- ALL CIRCUITS SHOWN ARE FOR REFERENCE AND MAY BE CHANGED BASED ON OPTIONAL COMPONENTS INSTALLED IN THE HOME.
- REFER TO DAPIA MANUAL FOR SYMBOL CHART.
- EITHER LIGHT OR RECEPTACLE MUST CONNECT TO SWITCH.
- EF-1= 50 CFM EXHAUST FAN REQUIRED FOR THERMAL ZONE III THERMAL ZONES I & II MAY USE FAN OR WINDOW W/1.5 SQ. FT. OPENABLE GLASS.
- EF-2= 50 CFM EXHAUST FAN REQUIRED THERMAL ZONE I, II, AND III.
- EF-3= 100 CFM RANGE EXHAUST FAN, SWITCH AT HOOD.
- EF-4= WHOLE HOUSE VENTILATION REQUIREMENTS PER DAPIA MANUAL.
- REFER TO DAPIA MANUAL OR THE MFG. INSTALLATION INSTRUCTIONS FOR PROPER WIRE SIZE AND BREAKER SIZE FOR SPECIFIC APPLIANCE AND MODEL BEING INSTALLED.
- ALL SMOKE ALARMS TO BE LOCATED ON THE CEILING.
- CARBON MONOXIDE ALARMS ARE ONLY REQUIRED WHEN HOME HAS EITHER FUEL BURNING APPLIANCES, IS GARAGE READY OR IS BASEMENT READY. REFERENCE DAPIA MANUAL FOR ADDITIONAL INFORMATION.

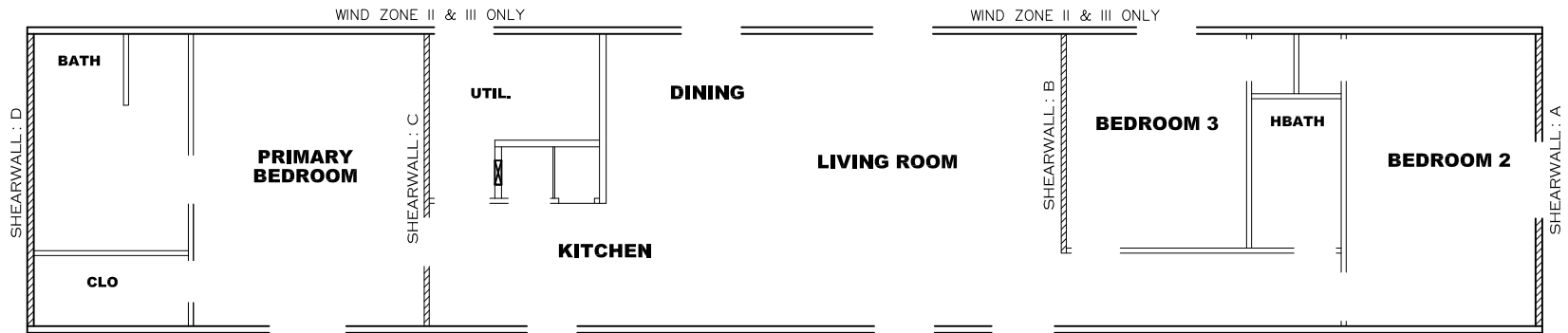
APPROVED **HWG** **APPROVED**
 12 JAN 2022
 FP-16-3006
 Federal Manufactured
 Home Construction
 And Safety Standards

1165 SQ.FT. (STD PLAN "CONDITIONED")	
N/A SQ.FT. (W/OPT. PORCH/RECESS "CONDITIONED")	
CMH MANUFACTURING	Model #: ANN16763B Date: 1/2/22/21 Scale: NTS
Product Designer: E. HARDWICK	295109 16 x 76 Anniversary
ELECTRICAL PLAN-06	



APPROVED **HWC** **APPROVED**
 12 JAN 2022
 FP-16-3006
 Federal Manufactured
 Home Construction
 And Safety Standards

1165 SQ.FT. (STD PLAN "CONDITIONED")	
N/A SQ.FT. (W/OPT. PORCH/RECESS "CONDITIONED")	
CMH MANUFACTURING	Model #: ANN16763B Date: 1/2/22/21 Scale: NTS
Product Designer: E. HARDWICK	Drawing #: 295109
16 x 76 Anniversary	
FLOOR PLAN	



Model # 29s109-8ft

Box Width = 184 " Single wide Minimum Joist Spacing 16 "
 Box Length = 76 ft. 95.5' 12" MIN. IBEAM No Offset Box
 No Skylights No Clerestory
 No Porches No Origami Dormer
 Joist Size = #2 sp 2x6 Lags 9Mx3" No Sunken Floor
 No Parapet Roof

Version R13.13

Wind Zone 1 Standard Roof							(3/8" sheathing only with 15 gax 1.5" at 5"/10" oc. (197 plf) Chords: 2x4 SPF #3 Top Plate & 2x4 Rail. Each spliced w/ 12" glue block.	96 inch sidewall
Shearwall	Dist./ Hitch	Length	PLF	# of Joists	Lags	Notes	SW1/SW2	
A	0'	129.625"	425	2	4/4	Split Shearwall *	64.75/64.87	
D	76'	Full	162	2	2/2			
Wind Zone 2 Standard Roof							(3/8" sheathing only with 15 gax 1.5" at 5"/10" oc. (197 plf) Chords: 2x4 SPF #3 Top Plate & 2x4 Rail. Each spliced w/ 12" glue block.	96 inch sidewall
Shearwall	Dist./ Hitch	Length	PLF	# of Joists	Lags	Notes	SW1/SW2	
A	0'	129.625"	425	2	4/4	Split Shearwall *	64.75/64.87	
B	24'	124"	425	3	4/1			
C	55.96'	146.5"	425	2	4/4	Split Shearwall	36/110.5	
D	76'	116"	162	2	2/1			
Wind Zone 3 Standard Roof							(3/8" sheathing only with 15 gax 1.5" at 5"/10" oc. (197 plf) Chords: 2x4 SPF #3 Top Plate & 2x4 Rail. Each spliced w/ 12" glue block.	96 inch sidewall
Shearwall	Dist./ Hitch	Length	PLF	# of Joists	Lags	Notes		
A	0'	129.625"	425	2	4/4	Split Shearwall *	64.75/64.87	
B	24'	128"	515	3	5/2			
C	55.96'	146.5"	425	2	4/4	Split Shearwall	36/110.5	
D	76'	140"	162	2	2/1			

APPROVED **HWG** **APPROVED**

12 JAN 2022
 FP-16-3006
 Federal Manufactured Home Construction And Safety Standards

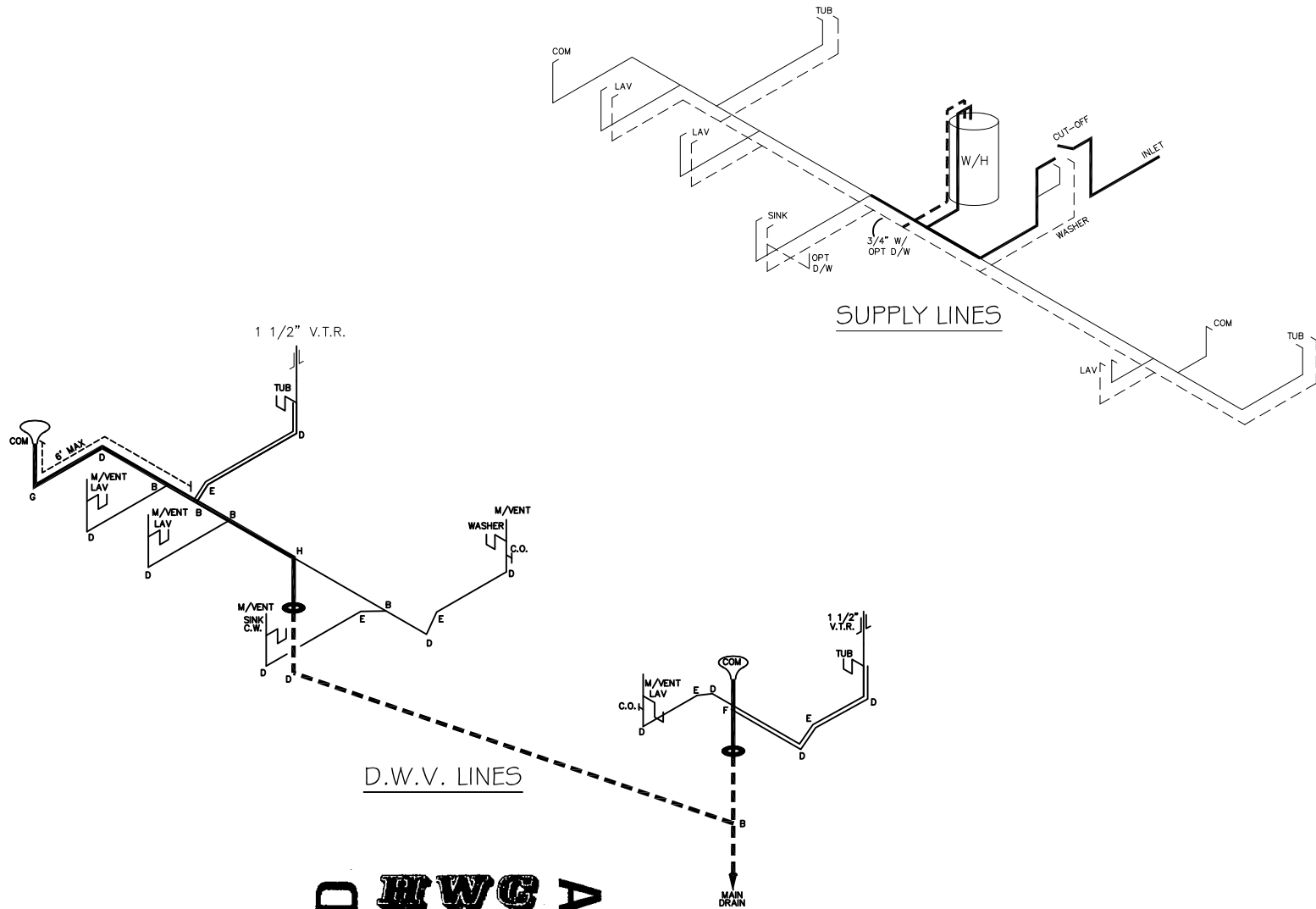
1165 SQ.FT. (STD PLAN "CONDITIONED")
 N/A SQ.FT. (W/OPT. PORCH/RECESS "CONDITIONED")

CMH MANUFACTURING	Model #: ANN16763B	Drawing #:
	Date: 1/2/22	Scale: NTS 295109
Product Designer: E. HARDWICK		16 x 76 Anniversary

8' SHEARWALLS

NOTE:
DASHED LINES INDICATE HOT WATER
SOLID LINES INDICATE COLD WATER

— = 3/4"
— = 1/2"



LEGEND	
A	SHORT TURN T-Y
B	LONG TURN T-Y
C	1/4 BEND
D	LONG SWEEP 1/4 BEND
E	45 ELL
F	DBL. SANITARY TEE
G	4x3 CLOSET ELL
H	DOUBLE ELL
I	22 1/2° ELL
J	45° Y
K	LONG TURN STREET ELBOW
L	45 FTG. ELL

DWV LINE SIZE CHART	
—	= 3"
—	= 2"
—	= 1 1/2"

APPROVED **HWG** **APPROVED**
 12 JAN 2022
 FP-16-3006
 Federal Manufactured
 Home Construction
 And Safety Standards

1165 SQ.FT. (STD PLAN "CONDITIONED")	
N/A SQ.FT. (W/OPT. PORCH/RECESS "CONDITIONED")	
CMH MANUFACTURING	Model #: ANN16763B Date: 1/2/22/21 Scale: NT5
Product Designer: E. HARDWICK	Drawing #: 295109
16 x 76 Anniversary	
D.W.V. and Supply Lines	