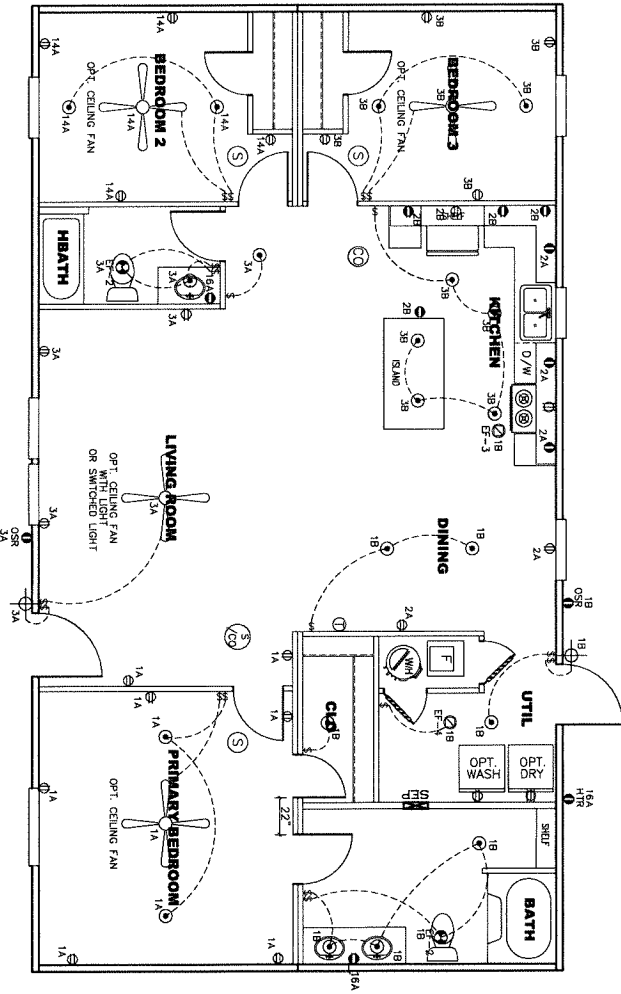
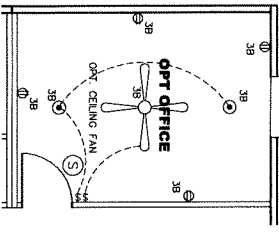


| CIRCUIT | CIRCUIT # | WIRE | BREAKER | CIRCUIT | CIRCUIT # | WIRE | BREAKER | CIRCUIT | CIRCUIT # | WIRE | BREAKER |
|----------------------------|-----------------|-------------|---------|---------------|---------------|-------------|---------|----------------|-----------|-------------|---------|
| Light/Recep | 1A,1B,3A,3B,14A | 14-2 | 15-SP | DRYER | 5A,7B | SEE NOTE #8 | | BATHROOM | 16A | 12-2 | 20-SP |
| Light/Recep | 2A,2B | 14-2 | 15-SP | WATER HEATER | 4A,6B | SEE NOTE #8 | | OPT G/DRS | 9B | SEE NOTE #8 | |
| WASHER | 12A | 12-2 | 20-SP | RANGE | 5B,7A | SEE NOTE #8 | | OPT SINK | 11A,B | SEE NOTE #8 | |
| RANGE HOOD / PT. GAS RANGE | 15A | SEE NOTE #8 | | FURNACE | 6A,8A,B,10A,B | SEE NOTE #8 | | OPT D/WASH | N/A | SEE NOTE #8 | |
| | | | | SMOKE/CO DECT | 4B | SEE NOTE #8 | | OPT ELEC PANEL | 15B | SEE NOTE #8 | |
| | | | | REFER | 12B | SEE NOTE #8 | | | | | |

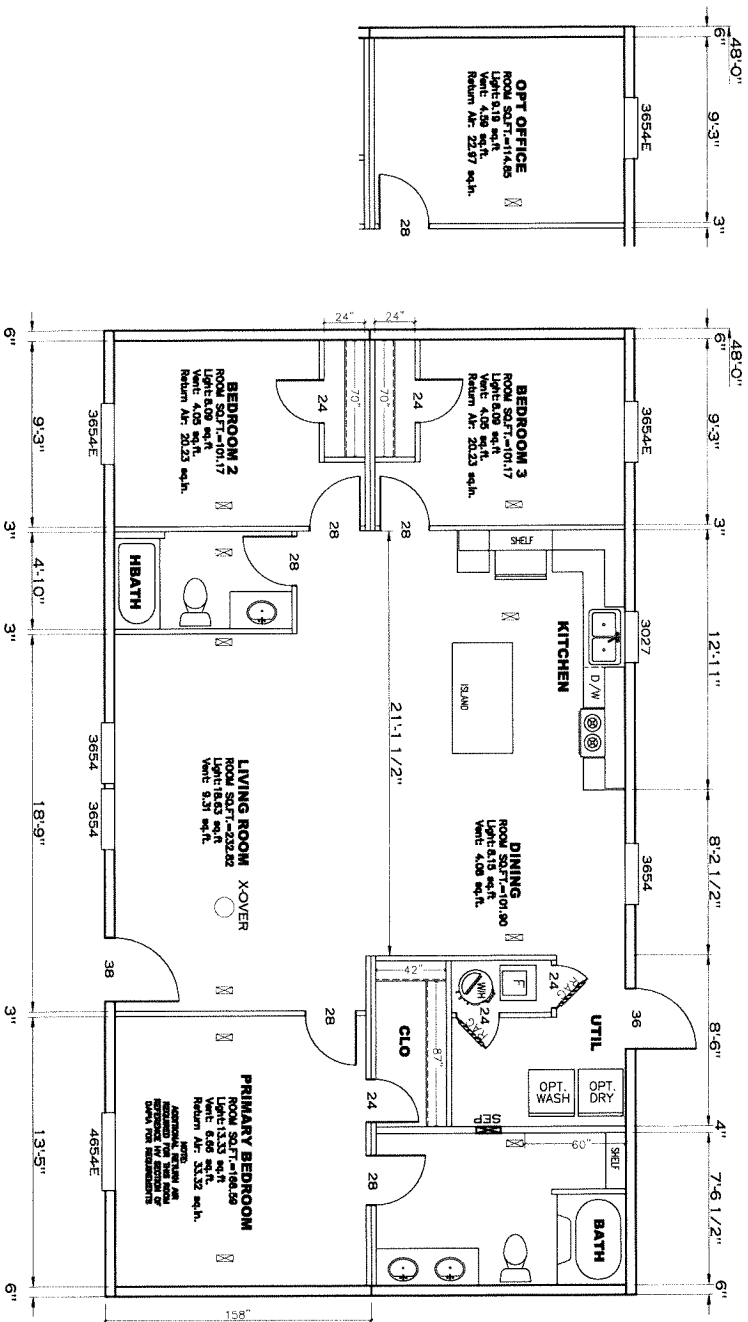


- NOTES:
- ALL CIRCUITS SHOWN ARE FOR REFERENCE AND MAY BE CHANGED BASED ON OPTIONAL COMPONENTS INSTALLED IN THE HOME.
 - REFER TO DAPPA MANUAL FOR SYMBOL CHART.
 - EITHER LIGHT OR RECEPTACLE MUST CONNECT TO SWITCH.
 - EF-1= 50 CFM EXHAUST FAN REQUIRED FOR THERMAL ZONE III. THERMAL ZONES I & II MAY USE FAN OR WINDOW W/1'S 50. FT. OPENABLE GLASS.
 - EF-2= 50 CFM EXHAUST FAN REQUIRED THERMAL ZONE I, II, AND III.
 - EF-3= 100 CFM RANGE EXHAUST FAN, SWITCH AT HOOD.
 - EF-4= WHOLE HOUSE VENTILATION REQUIREMENTS PER DAPPA MANUAL.
 - REFER TO DAPPA MANUAL OR THE MFG. INSTALLATION INSTRUCTIONS FOR PROPER WIRE SIZE AND BREAKER SIZE FOR SPECIFIC APPLIANCE AND MODEL BEING INSTALLED.
 - ALL SMOKE ALARMS TO BE LOCATED ON THE CEILING.
 - CARBON MONOXIDE ALARMS ARE ONLY REQUIRED WHEN HOME IS BASEMENT READY. REFERENCE DAPPA MANUAL FOR ADDITIONAL INFORMATION.
 - DIMENSIONS SHOWN ON PRINT ARE APPROXIMATE AND TO BE USED ONLY AS A GUIDELINE.

APPROVED

 REVISED
 14 JUN 2023
 FP-28-5613
 Federal Manufactured Home Construction And Safety Standards
APPROVED

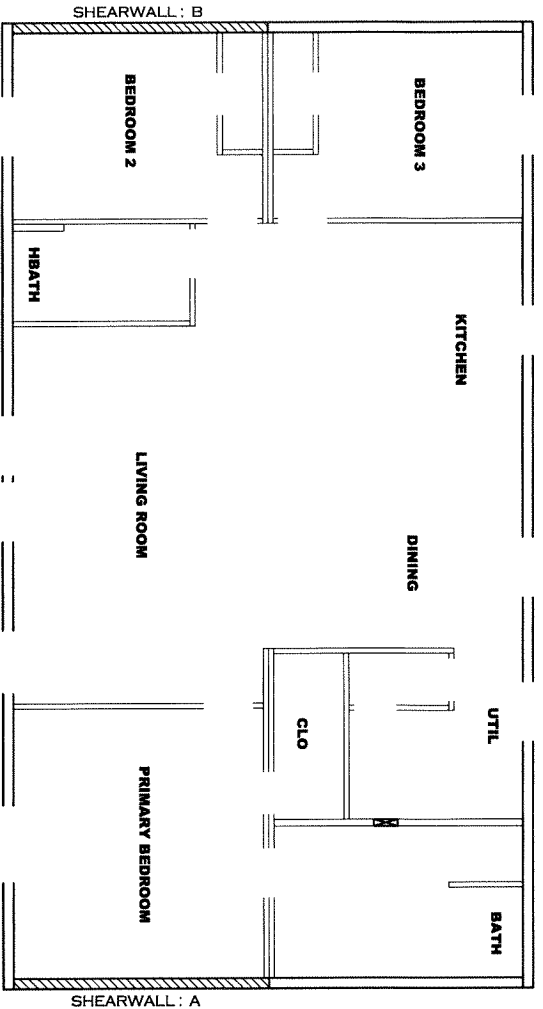
1264 SQ.FT. (STD PLAN "CONDITIONED")
 N/A SQ.FT. (W/OPT PORCH/RECESS "CONDITIONED")
 Product Designer: E HARDWICK
CMH MANUFACTURING
 Model #: LEG28483A
 Date: 1/24/23 (Scale: N/A)
 Drawing #: 29M202
ELECTRICAL PLAN-06
 REVISION ECR-3485
 6/28/23 EH



APPROVED **REVISED** **APPROVED**
 10 APR 2023
 FP-28-5613
 Federal Manufactured
 Home Construction
 And Safety Standards

| | |
|--|--------------------------|
| 1264 SQ.FT. (STD PLAN "CONDITIONED") | |
| N/A SQ.FT. (W/OPT. PORCH/RECESS "CONDITIONED") | |
| Product Designer: E HARDWICK | Model #: 1EG284483A |
| MANUFACTURING | Date: 1/24/23 Scale: N/A |
| Drawing #: 29M202 | |
| 28 X 48 Legend | |
| REVISION ECR-3185 | |

FLOOR PLAN



Model # 29M202-8FT Minimum Joist Spacing 16 "

Box Width = 158 " Double wide
 No Offset Box
 No Organiil Dormer
 No Sunken Floor
 No Parapet Roof

Box Length = 48 ft. 95.5" 12" MIN. IBEAM
 No Skylights
 No Porches

Joist Size = #2 sp 2x6 Lags 9MX3"

Version R13.4

| Wind Zone 1 Standard Roof | | (3/8" sheathing only with 15 gax 1.5" at 5'7/10" | | 96 inch sidewall | | |
|---|--------------|--|-----|------------------|------|-------|
| Diaphragm Construction: cc. (197 pif) Chords: #3 2x4 plate w/ 2x4 rail spliced w/ 12" glue block. | | | | | | |
| Shearwall | Dist./ Hitch | Length | PLF | # of Joists | Lags | Notes |
| A | 0' | 108" | 162 | 2 | 2/1 | |
| B | 48' | 108" | 162 | 2 | 2/1 | |
| Wind Zone 2 Standard Roof | | (3/8" sheathing only with 15 gax 1.5" at 5'7/10" | | 96 inch sidewall | | |
| Diaphragm Construction: cc. (197 pif) Chords: #3 2x4 plate w/ 2x4 rail spliced w/ 12" glue block. | | | | | | |
| Shearwall | Dist./ Hitch | Length | PLF | # of Joists | Lags | Notes |
| A | 0' | Full | 425 | 2 | 5/5 | |
| B | 48' | Full | 425 | 2 | 5/5 | |
| Wind Zone 3 Standard Roof | | (3/8" sheathing only with 15 gax 1.5" at 5'7/10" | | 96 inch sidewall | | |
| Diaphragm Construction: cc. (197 pif) Chords: #3 2x4 plate w/ 2x4 rail spliced w/ 12" glue block. | | | | | | |
| Shearwall | Dist./ Hitch | Length | PLF | # of Joists | Lags | Notes |
| A | 0' | Full | 425 | 2 | 5/5 | |
| B | 48' | Full | 425 | 2 | 5/5 | |

APPROVED

REVISED

10 APR 2023

FP-28-5613

3

APPROVED

Federal Manufactured Home Construction And Safety Standards

1264 SQ.FT. (STD. PLAN "CONDITIONED")

N/A SQ.FT. (W/OPT. PORCH/RECESS "CONDITIONED")

Product Designer: E HARDWICK

MANUFACTURING

CMH

Model #: LEG28483A

Date: 1/24/23 Scale: N/A

28 X 48 Legend

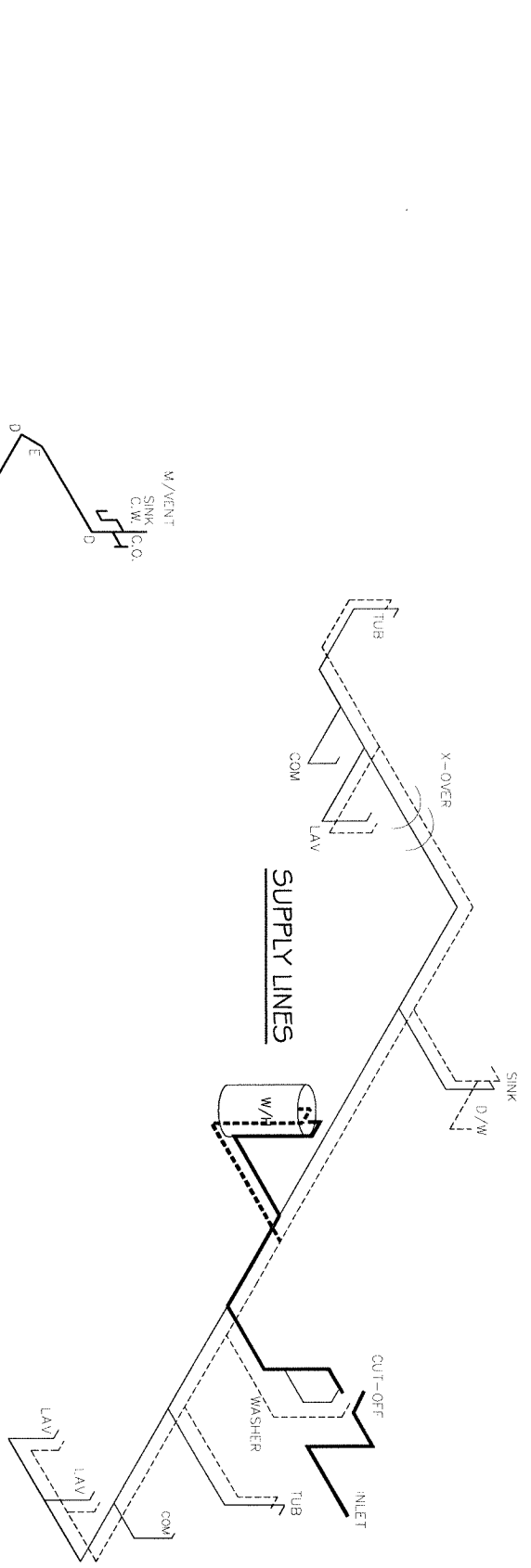
Drawing #: 29M202

8' SHEARWALL

REVISION RCR-3485

5/28/23 EH

NOTE:
 DASHED LINES INDICATE HOT WATER
 SOLID LINES INDICATE COLD WATER



LEGEND

| | |
|---|------------------------|
| A | SHORT TURN T-V |
| B | LONG TURN T-V |
| C | 1/4 BEND |
| D | LONG SWEEP 1/4 BEND |
| E | 90 DEGREE ELBOW |
| F | 45 DEGREE ELBOW |
| G | DOUBLE ELBOW |
| H | 22 1/2 DEGREE ELBOW |
| I | 45 DEGREE ELBOW |
| J | LONG TURN STREET ELBOW |
| K | 45 DEGREE ELBOW |

DWV LINE SIZE CHART

| | |
|--------|------|
| 3" | 1" |
| 2" | 3/4" |
| 1 1/2" | 1/2" |

APPROVED
REVISED
 10 APR 2023
 FP-28-5613
 Federal Manufactured Home Construction And Safety Standards

1264 SQ.FT. (STD. PLAN "CONDITIONED")
 N/A SQ.FT. (W/OPN. PORCH/RECESS "CONDITIONED")

| | | |
|------------------------------|--------------------|------------|
| Product Designer: E HARDWICK | Model #: LEG28463A | Drawing #: |
| MANUFACTURING | Date: 12/4/23 | Scale: N/A |
| 28 X 48 Legend | 29M202 | |

D.W.V. and Supply Lines

