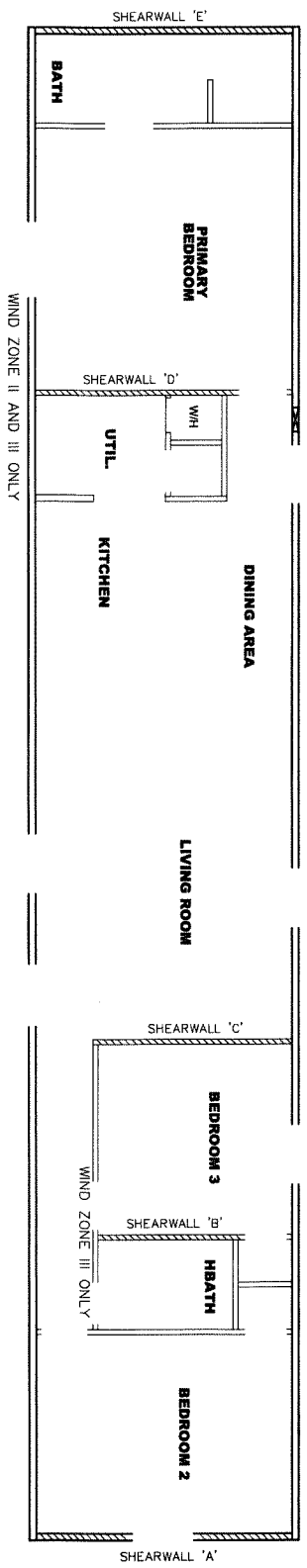


APPROVED
REVISION
REVISED
 22 JUN 2023
 FP-14-1231
 Federal Manufactured
 Home Construction
 And Safety Standards

1038 SQ.FT. (STD. PLAN "CONDITIONED")	
N/A	SQ.FT. (W/OPT. PORCH/RECESS "CONDITIONED")
CMH	MANUFACTURING
Model #: LEG14763A	Drawing #:
Date: 7/29/22	Scale: N/A
14' x 76' LEGEND	
Product Designer: E HARDWICK	
REVISION	EGR-3705
6/19/23	EH



Model # 29S114-8FT
 Box Width = 164" Single wide
 Box Length = 76 ft. 95.5" 12" MIN. I.BEAM No Clerestory
 No Skylights No Origami Dormer
 No Porches No Sunken Floor
 Joist Size = #2 sp 2x6 Lags 9Mx3"
 Minimum Joist Spacing 16"

Version R13.4

Wind Zone 1 Standard Roof
 Diaphragm Construction: (3/8" sheathing only with 15 gax 1.5" at 5'10" oc. (197 pif) Chords: #3 2x4 plate w/ 2x4 rail spliced w/ 12" glue block.

Shearwall Dist / Hicf	Length	PLF	# of Joists	Lags	Notes	SW1/SW2
A 0'	119.625'	162	2	2/2	Split Shearwall	59.75/59.87
C 25.04'	112"	324	2	3/1		
E 76'	116"	162	2	2/1		

Wind Zone 2 Standard Roof
 Diaphragm Construction: (3/8" sheathing only with 15 gax 1.5" at 5'10" oc. (197 pif) Chords: #3 2x4 plate w/ 2x4 rail spliced w/ 12" glue block.

Shearwall Dist / Hicf	Length	PLF	# of Joists	Lags	Notes	SW1/SW2
A 0'	119.625'	425	3	4/4	Split Shearwall	59.75/59.87
C 25.04'	112"	515	3	4/2		
D 57.62'	116"	425	3	4/1		
E 76'	108"	162	2	2/1		

Wind Zone 3 Standard Roof
 Diaphragm Construction: (3/8" sheathing w/celling with 15ga. @ 5/8 oc) (267 pif) Chords: #3 2x4 plate w/ 2x4 rail spliced w/ 12" glue block.

Shearwall Dist / Hicf	Length	PLF	# of Joists	Lags	Notes	SW1/SW2
A 0'	119.625'	162	2	2/2	Split Shearwall	59.75/59.87
B 15.21'	88.25"	324	2	2/2	Island Shearwall	
C 25.04'	116"	425	3	4/1		
D 57.62'	112"	515	3	4/2		
E 76'	128"	162	2			

NOTE: WIND ZONE III - PLF 267

Model # 29S114-OPT-8FT
 Box Width = 164" Single wide
 Box Length = 76 ft. 95.5" 12" MIN. I.BEAM No Clerestory
 No Skylights No Origami Dormer
 No Porches No Sunken Floor
 Joist Size = #2 sp 2x6 Lags 9Mx3"
 Minimum Joist Spacing 16"

Version R13.4

Wind Zone 1 Standard Roof
 Diaphragm Construction: (3/8" sheathing only with 15 gax 1.5" at 5'10" oc. (197 pif) Chords: #3 2x4 plate w/ 2x4 rail spliced w/ 12" glue block.

Shearwall Dist / Hicf	Length	PLF	# of Joists	Lags	Notes	SW1/SW2
A 0'	80.25'	162	2	1/1	Split Shearwall	40.125/40.12
C 21.63'	112"	324	2	3/1		
E 76'	124"	162	2	2/1		

Wind Zone 2 Standard Roof
 Diaphragm Construction: (3/8" sheathing w/celling with 15ga. @ 5/8 oc) (267 pif) Chords: #3 2x4 plate w/ 2x4 rail spliced w/ 12" glue block.

Shearwall Dist / Hicf	Length	PLF	# of Joists	Lags	Notes	SW1/SW2
A 0'	80.25'	425	3	3/3	Split Shearwall	40.125/40.12
C 21.63'	112"	515	3	4/2		
D 57.63'	120"	425	3	4/1		
E 76.01'	108"	162	2	2/1		

Wind Zone 3 Standard Roof
 Diaphragm Construction: (3/8" sheathing w/celling with 15ga. @ 5/8 oc) (267 pif) Chords: #3 2x4 plate w/ 2x4 rail spliced w/ 12" glue block.

Shearwall Dist / Hicf	Length	PLF	# of Joists	Lags	Notes	SW1/SW2
A 0'	119.625'	162	2	2/2	Split Shearwall	59.75/59.87
B 15.21'	88.25"	324	2	2/2	Island Shearwall	
C 25.04'	116"	425	3	4/1		
D 57.62'	112"	515	3	4/2		
E 76'	128"	162	2			

NOTE: WIND ZONE III - PLF 267

APPROVED **REVIS** **APPROVED**

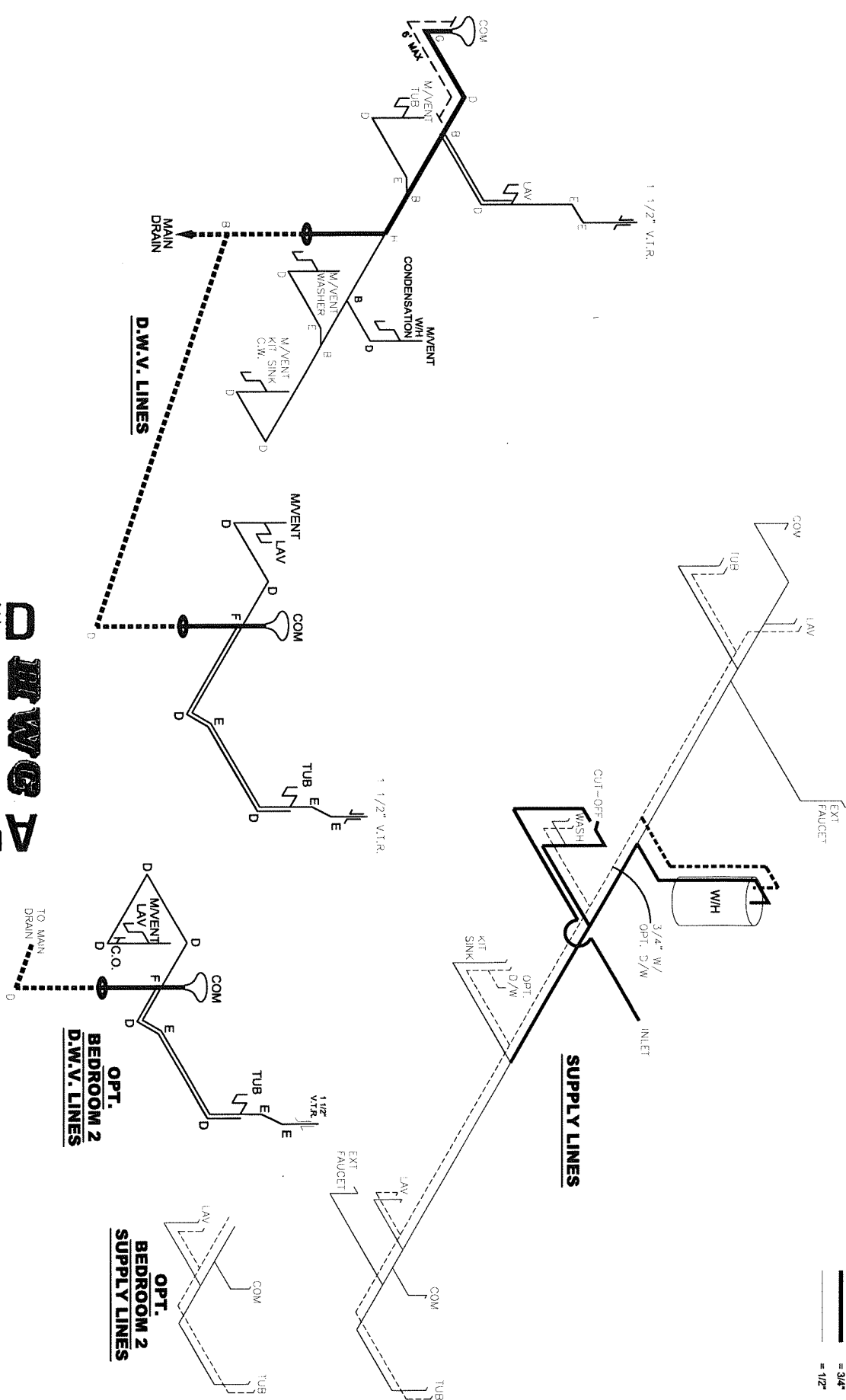
1038 SQ.FT. (STD PLAN "CONDITIONED")
 N/A SQ.FT. (W/OPT. PORCH/RECESS "CONDITIONED")

Product Designer: E HARDWICK
 Model #: LEG14763A
 Date: 7/29/22 Scale: N/A
 Drawing #: 29S114

8' SHEARWALL

2 REVISION ECR-3881
 2/15/23 EH

NOTE:
 DASHED LINES INDICATE HOT WATER
 SOLID LINES INDICATE COLD WATER



LEGEND	
A	SHORT TURN T-Y
B	LONG TURN T-Y
C	1/4 BEND
D	LONG SWEEP 1/4 BEND
E	45 ELL
F	DBL. SANITARY TEE
G	4x3 CLOSET ELL
H	DOUBLE ELL
I	22 1/2" ELL
J	45 Y
K	LONG TURN STREET ELBOW
L	45 FTG ELL

D.W.V. LINE SIZE CHART	
—	= 3"
—	= 2"
—	= 1 1/2"

APPROVED
REVIS
 22 JUN 2023
 FP-14-1231
APPROVED

Federal Manufactured
 Home Construction
 And Safety Standards

Product Designer: E HARDWICK	Model #: LEG14763A	Drawing #:
MANUFACTURING	Date: 7/29/22	Scale: 1/4"
1038 SQ.FT. (STD PLAN "CONDITIONED")		
N/A SQ.FT. (W/OPT. PORCH/RECESS "CONDITIONED")		
14' x 76' LEGEND		
D.W.V. and Supply Lines		

REVISION ECR-3705
 6/20/23 EH