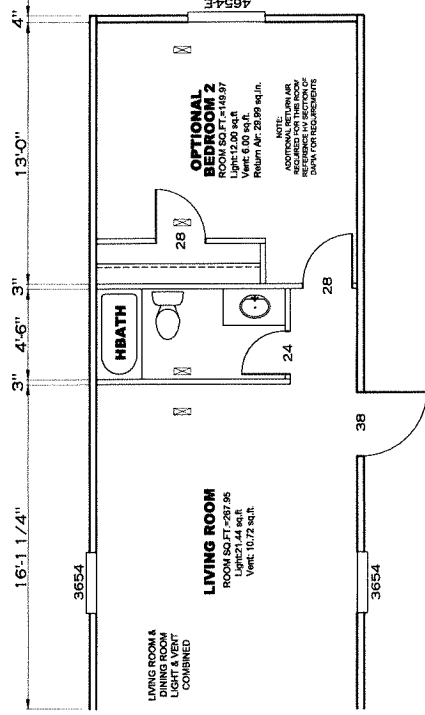
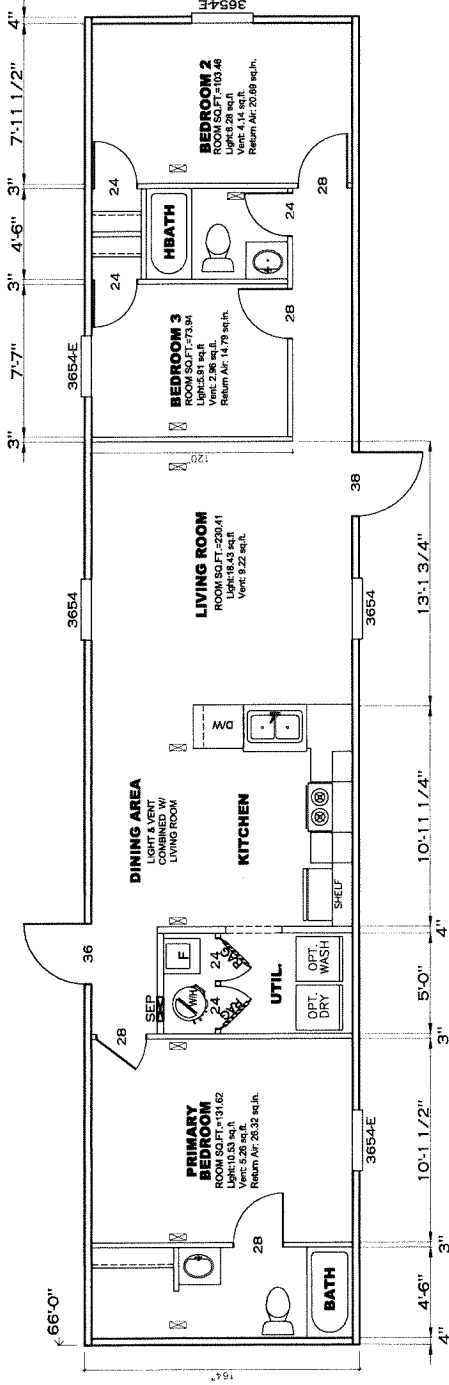


- NOTES:
1. ALL CIRCUITS SHOWN ARE FOR REFERENCE AND MAY BE CHANGED BASED ON OPTIONAL COMPONENTS INSTALLED IN THE HOME.
 2. REFER TO DAPIA MANUAL FOR SYMBOL CHART.
 3. EITHER LIGHT OR RECEPTACLE MUST CONNECT TO SWITCH.
 4. EF-1= 50 CFM EXHAUST FAN REQUIRED FOR THERMAL ZONE III THERMAL ZONES I & II MAY USE FAN OR WINDOW W/1.5 SQ. FT. OPENABLE GLASS.
 5. EF-2= 50 CFM EXHAUST FAN REQUIRED THERMAL ZONE I, II, AND III.
 6. EF-3= 100 CFM RANGE EXHAUST FAN, SWITCH AT HOOD.
 7. EF-4= WHOLE HOUSE VENTILATION REQUIREMENTS PER DAPIA MANUAL.
 8. REFER TO DAPIA MANUAL OR THE MFG. INSTALLATION INSTRUCTIONS FOR PROPER WIRE SIZE AND BREAKER SIZE FOR SPECIFIC APPLIANCE AND MODEL BEING INSTALLED.
 9. ALL SMOKE ALARMS TO BE LOCATED ON THE CEILING.
 10. CARBON MONOXIDE ALARMS ARE ONLY REQUIRED WHEN HOME HAS EITHER FUEL BURNING APPLIANCES, IS GARAGE READY OR IS BASEMENT READY. REFERENCE DAPIA MANUAL FOR ADDITIONAL

APPROVED
REVISED
 19 JUN 2023
 FP-14-1230
 Federal Manufactured
 Home Construction
 And Safety Standards

902 SQ.FT. (STD. PLAN "CONDITIONED")
 N/A SQ.FT. (W/OPT. PORCH/RECESS "CONDITIONED")
CMH MANUFACTURING
 Model #: LEG14663A Drawing #: 295113
 Date: 7/26/22 Scale: N/A
 Product Designer: E HARDWICK 1'4" x 66' LEGEND
ELECTRICAL PLAN-06
 REVISION EGR-3704
 5/26/23 EH

CIRCUIT	CIRCUIT #	WIRE	BREAKER	CIRCUIT	CIRCUIT #	WIRE	BREAKER
LIGHT/RECEP	1A, 1B, 3A, 3B, 12B	14-2	15-SP	BATHROOM	16A	12-2	20-SP
KITCHEN	2A, 2B	12-2	20-SP	OPT GOS/SP	9B	SEE NOTE #8	SEE NOTE #8
WASHER	12A	12-2	20-SP	OPT SPN W/PLAC	11A, B	SEE NOTE #8	SEE NOTE #8
DRYER	5A, 7B	SEE NOTE #8	SEE NOTE #8	FREEZER	N.A.	SEE NOTE #8	SEE NOTE #8

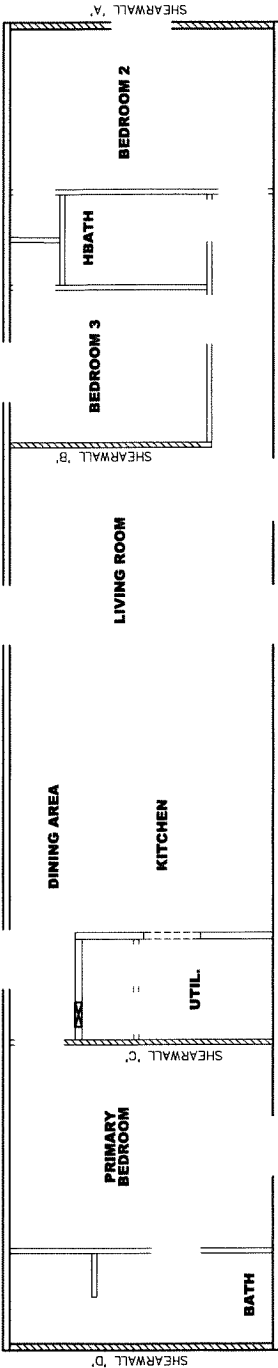


APPROVED
REVISED
19 JUN 2023
FP-14-1230
Federal Manufactured
Home Construction
And Safety Standards

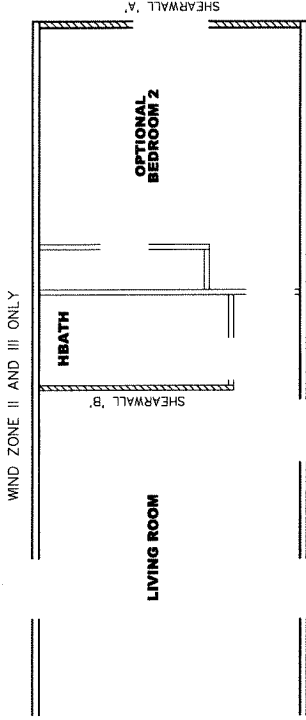
APPROVED
REVISED
19 JUN 2023
FP-14-1230
Federal Manufactured
Home Construction
And Safety Standards

902	SO.FT. (STD PLAN "CONDITIONED")
N/A	SO.FT. (W/OPT. PORCH/RECESS "CONDITIONED")
CMH	Model #: LEG14663A
MANUFACTURING	Date: 7/26/22 Scale: N/A
Product Designer: E HARDWICK	295113
14' x 66' LEGEND	
FLOOR PLAN	
REVISION ECR-3704 5/26/23 EH	

WIND ZONE II AND III ONLY



WIND ZONE II AND III ONLY



Model # 29s113-8ft

Box Width = 164"
 Box Length = 66 ft.
 No Skylights
 No Porches
 Joist Size = #2 sp 2x6

Model # 29s113-2BR-OPT-8ft

Box Width = 164"
 Box Length = 66 ft.
 No Skylights
 No Porches
 Joist Size = #2 sp 2x6

Minimum Joist Spacing 16"
 No Offset Box
 No Clerestory
 No Origami Dormer
 No Sunken Floor
 No Parapet Roof

Single wide
 95.5" 12" MIN. IBEAM
 Lags 9Mx3"

Single wide
 95.5" 12" MIN. IBEAM
 No Origami Dormer
 No Sunken Floor
 No Parapet Roof

Version R13.13

(3/8" sheathing only with 15 gax 1.5" at 5/10" oc. (197 plf) Chords: 2x4 SPF #3 Top Plate & 2x4 Rail. Each spliced w/ 12" glue block.

Wind Zone 1 Standard Roof

Shearwall	Dist./ Hitch	Length	PLF	# of Joists	Lags	Notes
A	0'	119.625'	425	2	4/4	Split Shearwall * 96 inch sidewall
D	66'	148'	162	2	2/1	SW1/SW2 59.875/59.7

Wind Zone 2 Standard Roof

Shearwall	Dist./ Hitch	Length	PLF	# of Joists	Lags	Notes
A	0'	119.625'	425	2	4/4	Split Shearwall * 96 inch sidewall
B	21'	112'	425	3	4/1	SW1/SW2 59.875/59.7
C	50.67'	112'	425	3	4/1	
D	66'	92'	162	2	1/1	

Wind Zone 3 Standard Roof

Shearwall	Dist./ Hitch	Length	PLF	# of Joists	Lags	Notes
A	0'	119.625'	425	2	4/4	Split Shearwall * 96 inch sidewall
B	21'	112'	425	3	4/2	SW1/SW2 59.875/59.7
C	50.67'	120'	425	3	4/1	
D	66'	108'	162	2	2/1	

(3/8" sheathing only with 15 gax 1.5" at 5/10" oc. (197 plf) Chords: 2x4 SPF #3 Top Plate & 2x4 Rail. Each spliced w/ 12" glue block.

Wind Zone 1 Standard Roof

Shearwall	Dist./ Hitch	Length	PLF	# of Joists	Lags	Notes
A	0'	109.625'	425	2	4/4	Split Shearwall * 96 inch sidewall
D	66'	148'	162	2	2/1	SW1/SW2 54.75/54.87

Wind Zone 2 Standard Roof

Shearwall	Dist./ Hitch	Length	PLF	# of Joists	Lags	Notes
A	0'	109.625'	425	2	2/2	Split Shearwall * 96 inch sidewall
B	18.21'	112'	425	3	4/1	SW1/SW2 54.75/54.87
C	50.67'	112'	425	3	4/1	
D	66'	92'	162	2	1/1	

Wind Zone 3 Standard Roof

Shearwall	Dist./ Hitch	Length	PLF	# of Joists	Lags	Notes
A	0'	109.625'	425	2	4/4	Split Shearwall * 96 inch sidewall
B	18.21'	112'	515	3	4/2	SW1/SW2 54.75/54.87
C	50.67'	112'	515	3	4/2	
D	66'	108'	162	2	2/1	

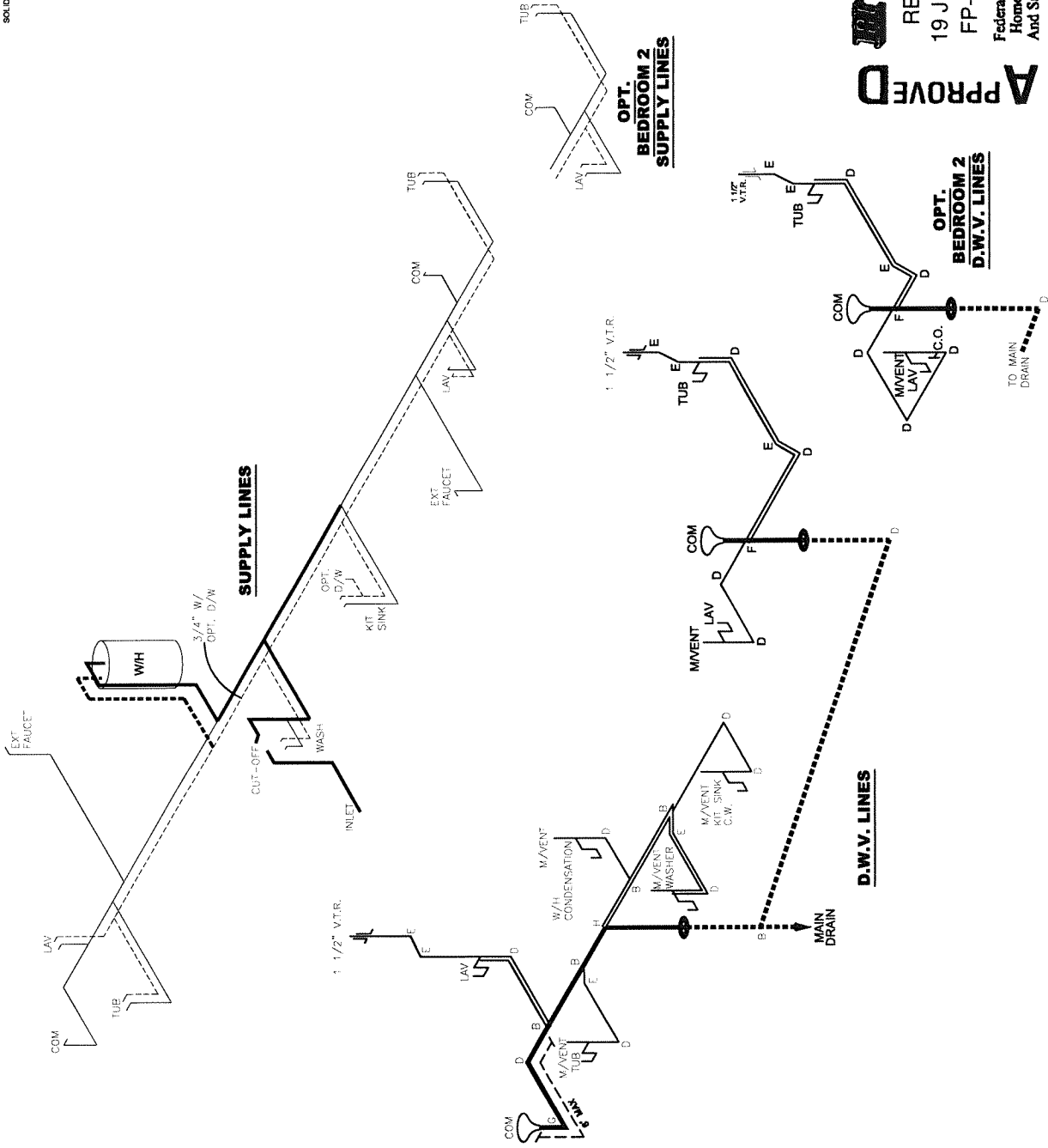
NOTE: WIND ZONE III IS 267 PLF

APPROVED
 REVISED
 19 JUN 2023
 FP-14-1230
 Federal Manufactured Home Construction And Safety Standards

902 SQ.FT. (STD. PLAN "CONDITIONED")
 N/A SQ.FT. (W/OPT. PORCH/RECESS "CONDITIONED")
CMH
 MANUFACTURING
 Model #: LEG14663A
 Date: 7/26/22
 Scale: N/A
 Drawing #: 295113
 Product Designer: E HARDWICK
 1" x 66' LEGEND
 2 REVISION ECR- 3704
 5/30/23 EH

NOTE:
 DASHED LINES INDICATE HOT WATER
 SOLID LINES INDICATE COLD WATER

— = 3/4"
 — = 1/2"



LEGEND	
A	SHORT TURN T-Y
B	LONG TURN T-Y
C	1/4 BEND
D	LONG SWEEP 1/4 BEND
E	45 ELL
F	DBL. SANITARY TEE
G	4x3 CLOSET ELL
H	DOUBLE ELL
I	22 1/2" ELL
J	45° Y
K	LONG TURN STREET ELBOW
L	45 FTG ELL

D.W.V. LINE SIZE CHART	
—	= 3"
—	= 2"
—	= 1 1/2"

Model #:	LEGI4663A	Drawing #:	295113
Date:	7/28/22	Scale:	1/4" = 1'-0"
Product Designer: E HARDWICK			

902 SQ.FT. (STD PLAN "CONDITIONED")
 N/A SQ.FT. (W/OPT. PORCH/RECESS "CONDITIONED")

APPROVED
 REVISED
 19 JUN 2023
 FP-14-1230

APPROVED
 Federal Manufactured
 Home Construction
 And Safety Standards

CMH
 MANUFACTURING

D.W.V. and Supply Lines

1'4" x 66' LEGEND

6/28/23 RH