

Duct Design Input

Model _____ **Mfg.** CMH-MFG-929 **Date** 7/5/2018 **Source** 29-11m025

Design Type	Flow Direction	Plenum Connection	Plenum Location	Plenum Width X Plenum Length
Double-section	Down Flow	Direct to a Trunk	Floor B	13 X 13 (Sqr. in)

Note: all the unspecified dimensions are in inches.

Crossover	Supply	To	Material	H / D	Width	Length (ft)	Offset Dir.	Offset
1	Floor B	Floor A	Flex	12	N/A	12	Center	0

Floor A	Vertical	Material	Trunk H	Trunk W					
	First Floor	Aluminum	5	14					
	Direction	Distance(ft)	Boot Type	Boot H/D	Boot W	Boot L (ft)	Reg. Type	Register H	Register W
	Left 1	14.25	Reg. Boot	4	10	0.5	Boot Reg.	4	10
	Left 2	7	Reg. Boot	4	10	0.5	Boot Reg.	4	10
	Left 3	5.5	Reg. Boot	4	10	0.5	Boot Reg.	4	10
	Left 4	10.5	Reg. Boot	4	10	0.5	Boot Reg.	4	10
	Right 1	1.5	Reg. Boot	4	10	0.5	Boot Reg.	4	10
	Right 2	16.75	Reg. Boot	4	10	0.5	Boot Reg.	4	10
	Right 3	4.25	Reg. Boot	4	10	0.5	Boot Reg.	4	10

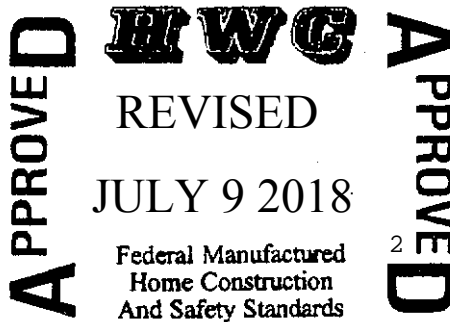
Floor B	Vertical	Material	Trunk H	Trunk W					
	First Floor	Aluminum	5	14					
	Direction	Distance(ft)	Boot Type	Boot H/D	Boot W	Boot L (ft)	Reg. Type	Register H	Register W
	Left 1	7.5	Reg. Boot	4	10	0.5	Boot Reg.	4	10
	Left 2	15	Reg. Boot	4	10	0.5	Boot Reg.	4	10
	Left 3	9	Reg. Boot	4	10	0.5	Boot Reg.	4	10
	Right 1	6	Reg. Boot	4	10	0.5	Boot Reg.	4	10
	Right 2	17.5	Flex (Inline)	6	N/A	6.75	Boot Reg.	4	10
	Right 3	3	Reg. Boot	4	10	0.5	Boot Reg.	4	10

Duct Design Performance

The refrigerated air cooling supply duct system including registers must be capable of handling at least 300 cfm per 10,000 Btuh with a static pressure no greater than 0.3 inches of water when measured at room temperature-HUD Manufactured Home Construction and Safety Standards, Part 3280.715 (a) (3) (ii)

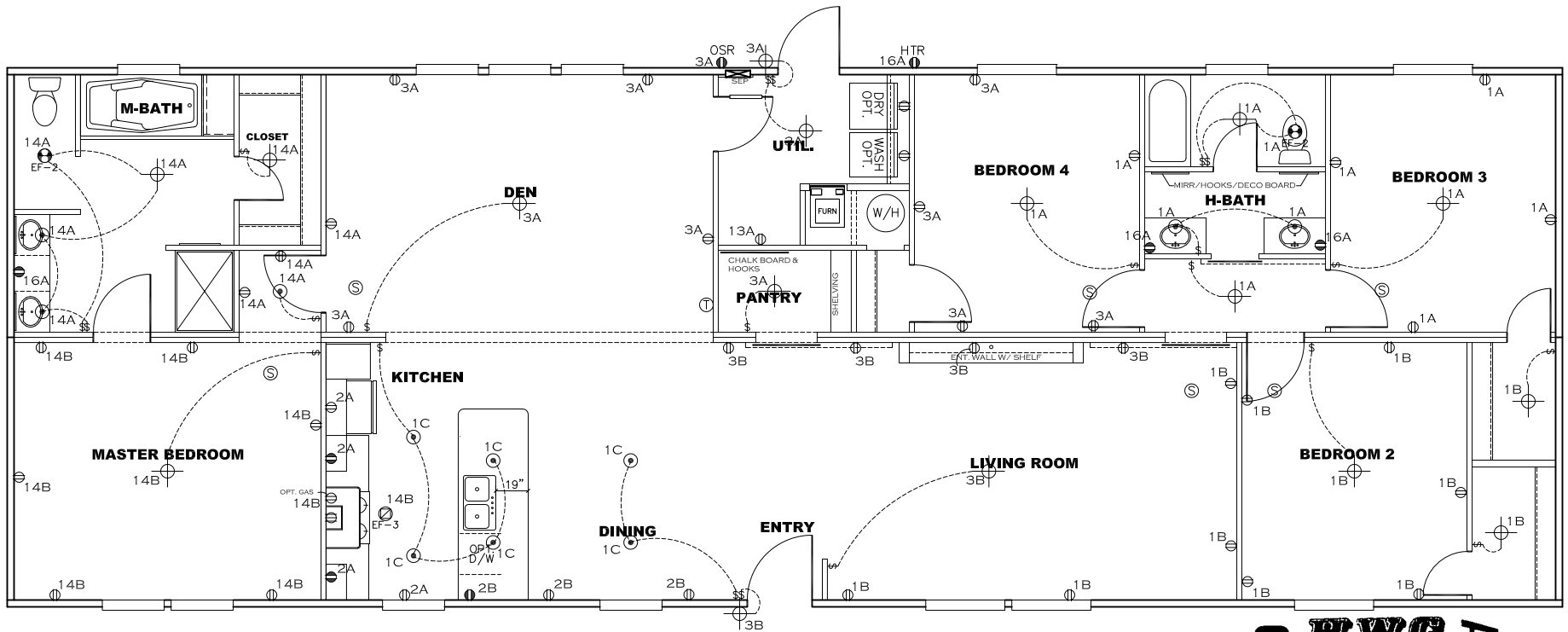
Performance Calculated at a Static Pressure of 0.3 in. wc.

Air Flow Rate (SCFM)	2540	Duct Capacity (Btu/Hr)	84700
----------------------	------	------------------------	-------



NOTES:

1. ALL CIRCUITS SHOWN ARE FOR REFERENCE AND MAY BE CHANGED BASED ON OPTIONAL COMPONENTS INSTALLED IN THE HOME.
2. REFER TO EL SECTION OF THE DAPIA FOR SYMBOL CHART.
3. EITHER LIGHT OR RECEPTACLE MUST CONNECT TO SWITCH.
4. EF-1= 50 CFM EXHAUST FAN REQUIRED FOR THERMAL ZONE III THERMAL ZONES I & II MAY USE FAN OR WINDOW W/1.5 SQ. FT. OPENABLE GLASS.
5. EF-2= 50 CFM EXHAUST FAN REQUIRED THERMAL ZONE I, II, AND III.
6. EF-3= 100 CFM RANGE EXHAUST FAN, SWITCH AT HOOD.
7. EF-4= WHOLE HOUSE VENTILATION PER REQUIREMENTS IN S-HV-10 & 10A OR M-HV-11 & 11A OF DAPIA.
8. REFER TO EL SECTION OF THE DAPIA OR THE MFG. INSTALLATION INSTRUCTIONS FOR PROPER WIRE SIZE AND BREAKER SIZE FOR SPECIFIC APPLIANCE AND MODEL BEING INSTALLED.
9. ALL SMOKE ALARMS TO BE LOCATED ON THE CEILING.
10. DIMENSIONS SHOWN ON PRINT ARE APPROXIMATE AND TO BE USED ONLY AS A GUIDELINE.

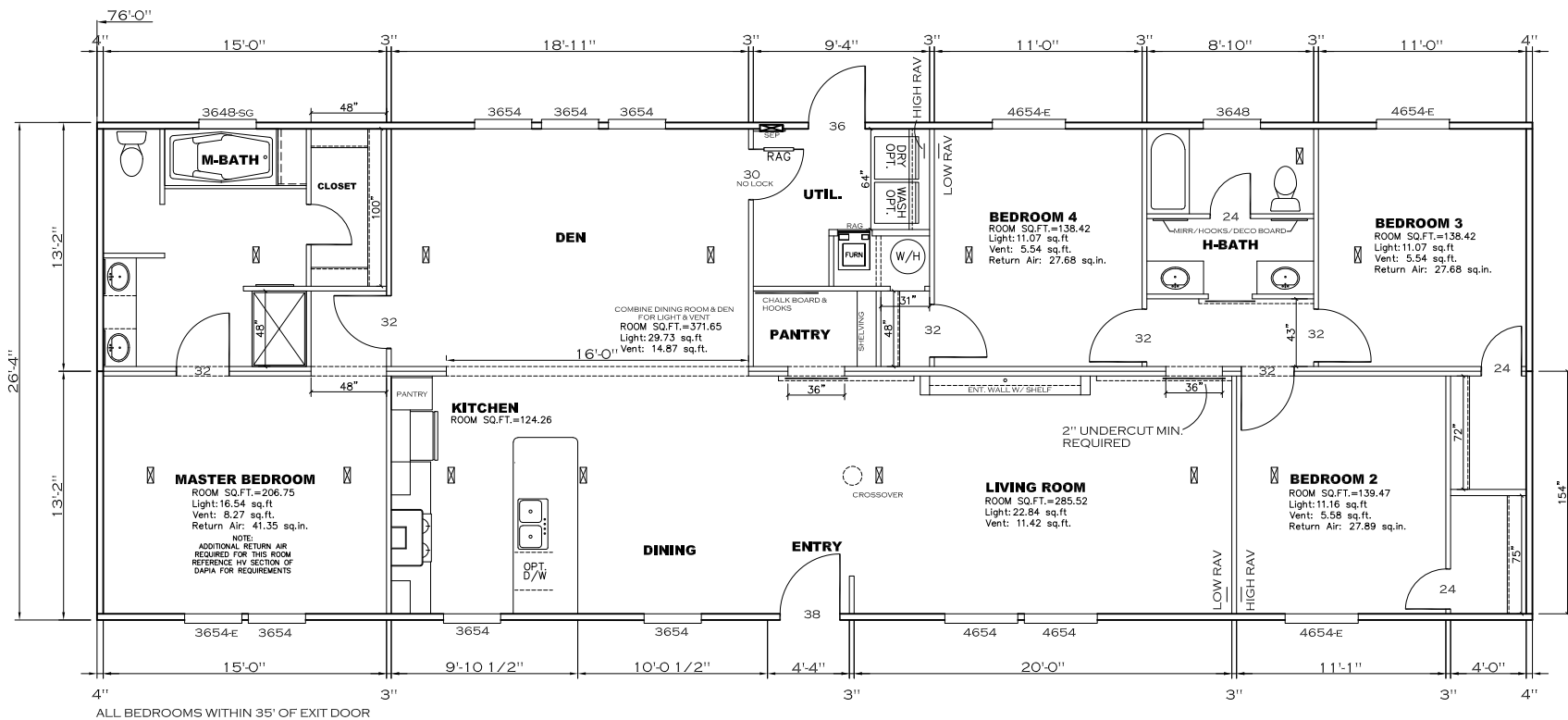


APPROVED **HWC** **APPROVED**
REVISED
 09 AUG 2018
 FP-28-4673
 Federal Manufactured
 Home Construction
 And Safety Standards

2001 SQ.FT. (STD PLAN "CONDITIONED")
 SQ.FT. (W/OPT. PORCH/RECESS "CONDITIONED")

CIRCUIT	CIRCUIT #	WIRE	BREAKER	CIRCUIT	CIRCUIT #	WIRE	BREAKER	CIRCUIT	CIRCUIT #	WIRE	BREAKER
LIGHT/RECEP	1A,1B,1C,3A,3B,14A,14B	14-2	15-SP	WATER HEATER	4A,6B	SEE NOTE #8		BATH/HTR	16 A	12-2	20-SP
KITCHEN/DINING	2A, 2B	12-2	20-SP	RANGE	5B,7A	SEE NOTE #8		OPT G/DISP	9B	SEE NOTE #8	
WASHER	12A	12-2	20-SP	FURNACE	6A,8A,B,10A,B	SEE NOTE #8		OPT SPA/WP/JAC	11A,B	SEE NOTE #8	
DRYER	5A,7B	SEE NOTE #8		OPT D/WASH	9A	SEE NOTE #8		FREEZER	13 A	SEE NOTE #8	
				SMOKE ALARM	4B	SEE NOTE #8					

CMH MANUFACTURING	Model #: SSP28764A1B5	Drawing #:
Product Designer: JDC	Date: 11/4/15	Scale: NTS
28 x 76 Breeze II		29-11M025
ELECTRICAL PLAN-06		REVISION ECR-649846 7/5/18 EH



FP-28-4673

APPROVED **HWG** **APPROVED**

REVISED

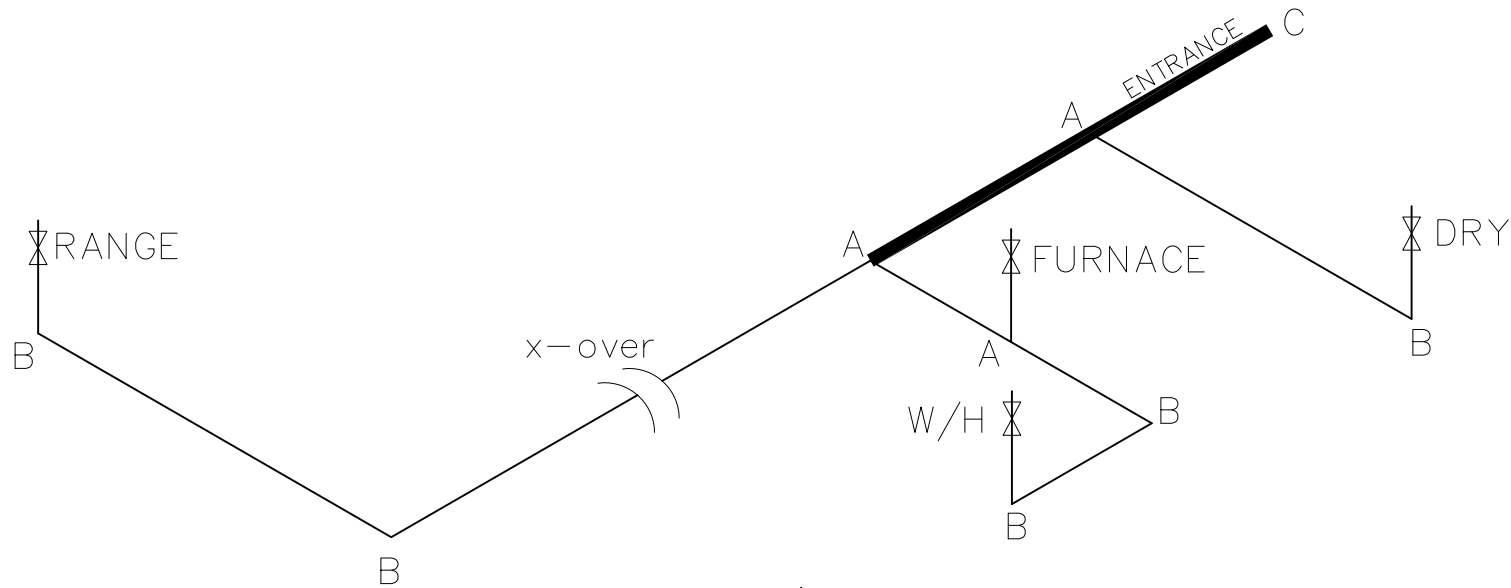
OCT 29 2018

Federal Manufactured Home Construction And Safety Standards

2001 SQ.FT. (STD PLAN "CONDITIONED")		
SQ.FT. (W/OPT. PORCH/RECESS "CONDITIONED")		
CMH MANUFACTURING	Model #: 55P28764A 85	Drawing #: 29-11M025
Product Designer: JDC	Date: 1/4/15	Scale: NTS
28 x 76 Breeze II		3/REVISION ECR-705935
FLOOR PLAN		10/24/18 EH

LEGEND		APPLIANCE BTU's RATINGS MAX. INPUT	
SYM	FITTINGS		
A	TEE	FURNACE	77,000 BTU'S
B	90 ELL	W/H	36,000 BTU'S
X	VALVE	RANGE	55,500 BTU'S
C	CAP	DRYER	22,000 BTU'S

MDL=50'



NOTES:

- 1) ALL PIPE IS 3/4" I.D.CAST (EXCEPT WHERE NOTED OTHERWISE)
- 2) MDL=MAX. DETERMINED LENGTH OF PIPE
- 3) FITTING MAY BE ADDED OR SUBTRACTED TO TRAVERSE VARIATIONS IN AXLE QUANTITY, PLACEMENT, AND FRAME TYPE.
- 4) INLET LOCATION MAY VARY TO STAY WITHIN MAX. DETERMINED LENGTH

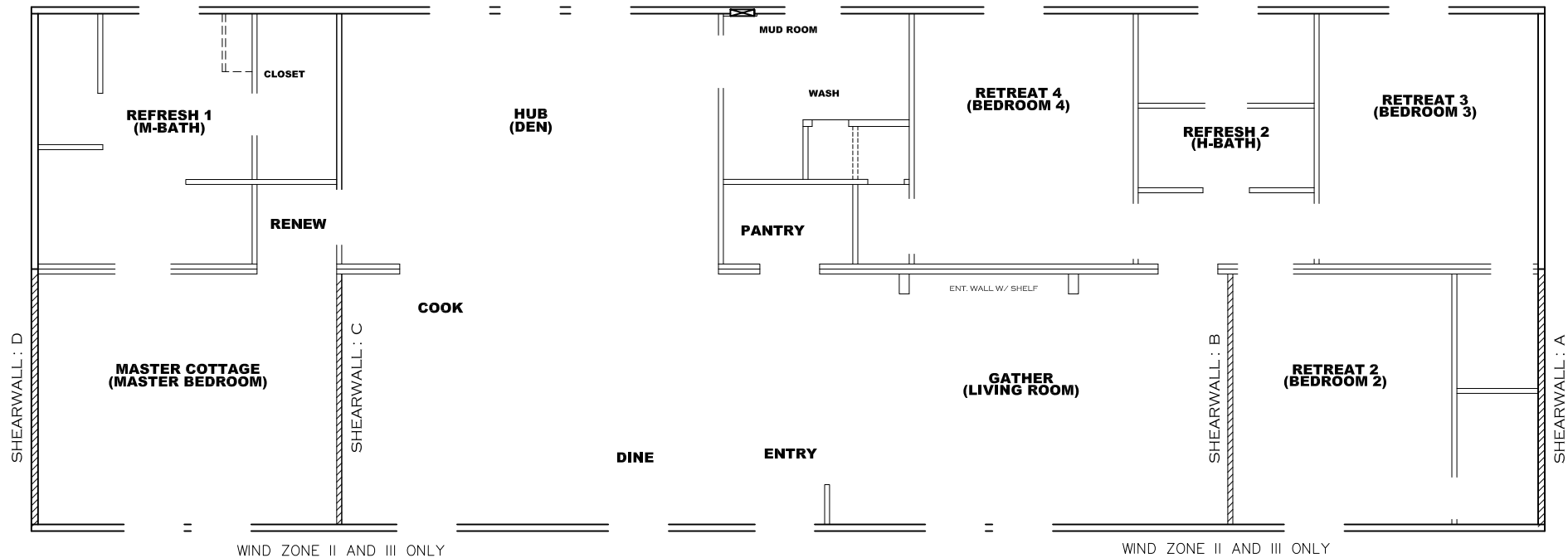
GAS LINE SIZE CHART	
	= 1"
	= 3/4"

APPROVED
HWC
 REVISED
 JULY 9 2018
 Federal Manufactured
 Home Construction
 And Safety Standards
APPROVED
 2

2001 SQ.FT. (STD PLAN "CONDITIONED")
 SQ.FT. (W/OPT. PORCH/RECESS "CONDITIONED")

CMH MANUFACTURING	Model #: 55P28764A185	Drawing #:
	Date: 1/14/15	Scale: NTS
Product Designer: JDC	28 x 76 Breeze II	
GAS LINE DETAIL		

FP-28-4673



Model # 29-11m025-8ft Minimum Joist Spacing 16 "

Box Width = 158 " Double wide No Offset Box
 Box Length = 76 ft. 95.5" 12" MIN. IBEAM No Clerestory
 No Skylights No Origami Dormer
 No Porches No Sunken Floor
 Joist Size = #2 sp 2x6 Lags 9Mx3" No Parapet Roof

Version R13.6a

Wind Zone 1 Standard Roof (3/8" sheathing only with 15 gax 1.5" at 5"/10" oc. (197 plf) Chords: #3 2x4 plate w/ 2x4 rail spliced w/ 12" glue block. 96 inch sidewall

Shearwall	Dist./ Hitch	Length	PLF	# of Joists	Lags	Notes
A	0'	Full	425	2	5/5	
D	76'	Full	425	2	5/5	

Wind Zone 2 Standard Roof (3/8" sheathing only with 15 gax 1.5" at 5"/10" oc. (197 plf) Chords: #3 2x4 plate w/ 2x4 rail spliced w/ 12" glue block. 96 inch sidewall

Shearwall	Dist./ Hitch	Length	PLF	# of Joists	Lags	Notes
A	0'	92"	162	2	1/1	
B	15.79'	Full	425	2	3/3	
C	60.54'	Full	425	2	3/3	
D	76'	92"	162	2	1/1	

Wind Zone 3 Standard Roof (3/8" sheathing only with 15 gax 1.5" at 5"/10" oc. (197 plf) Chords: #3 2x4 plate w/ 2x4 rail spliced w/ 12" glue block. 96 inch sidewall

Shearwall	Dist./ Hitch	Length	PLF	# of Joists	Lags	Notes
A	0'	112"	162	2	2/1	
B	15.79'	Full	515	2	4/4	
C	60.54'	Full	515	2	4/4	
D	76'	108"	162	2	2/1	

APPROVED **HWG** **APPROVED**

REVISED

JULY 13 2018

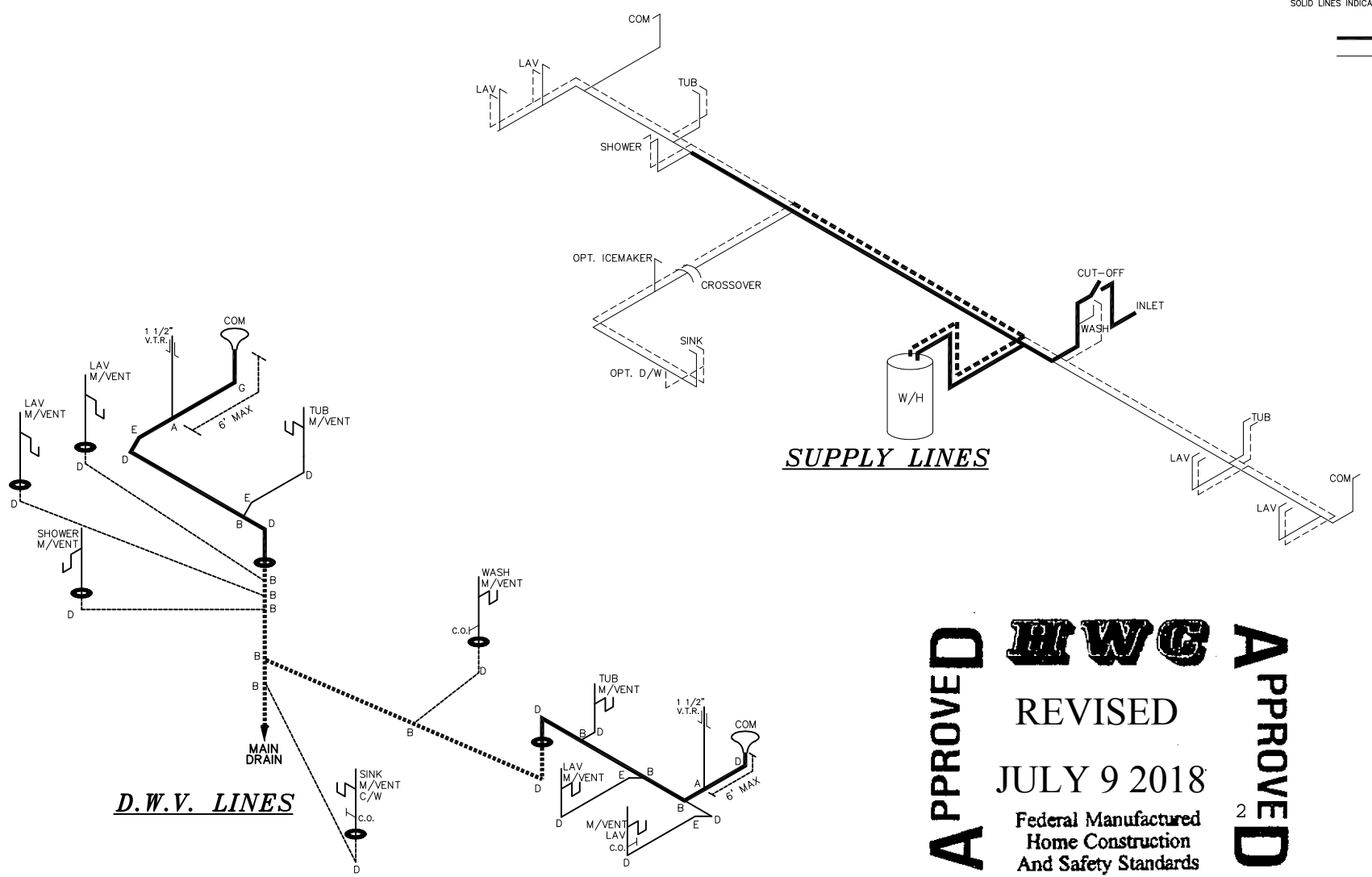
Federal Manufactured
Home Construction
And Safety Standards

FP-28-4673

2001 SQ.FT. (STD PLAN "CONDITIONED") SQ.FT. (W/OPT. PORCH/RECESS "CONDITIONED")		Model #: SSP28764A185	Drawing #:
CMH MANUFACTURING	Date: 1/14/15	Scale: NTS	29-11M025
Product Designer: JDC		28 x 76 Breeze II	
SHEARWALL		REVISION ECR-649846 7/5/18 EH	

NOTE:
DASHED LINES INDICATE HOT WATER
SOLID LINES INDICATE COLD WATER

— = 3/4"
— = 1/2"



DWV LINE SIZE CHART

—	= 3"
—	= 2"
—	= 1 1/2"

LEGEND

A	SHORT TURN T-Y
B	LONG TURN T-Y
C	1/4 BEND
D	LONG SWEEP 1/4 BEND
E	45 ELL
F	DBL. SANITARY TEE
G	4x3 CLOSET ELL
H	DOUBLE ELL
I	22 1/2" ELL
J	45° Y
K	LONG TURN STREET ELBOW
L	45 FTG ELL

FP-28-4673

A APPROVED **HWG** **A** APPROVED
 REVISED
 JULY 9 2018
 Federal Manufactured
 Home Construction
 And Safety Standards

2001 SQ.FT. (STD PLAN "CONDITIONED")
SQ.FT. (W/OPT. PORCH/RECESS "CONDITIONED")

CMH MANUFACTURING	Model #: 55P28764A185	Drawing #:
Product Designer: JDC	Date: 1/14/15	Scale: NT5
28 x 76 Breeze II		29-11M025
D.W.V. and Supply Lines		2/7/18 REVISION BCR-049848 RE